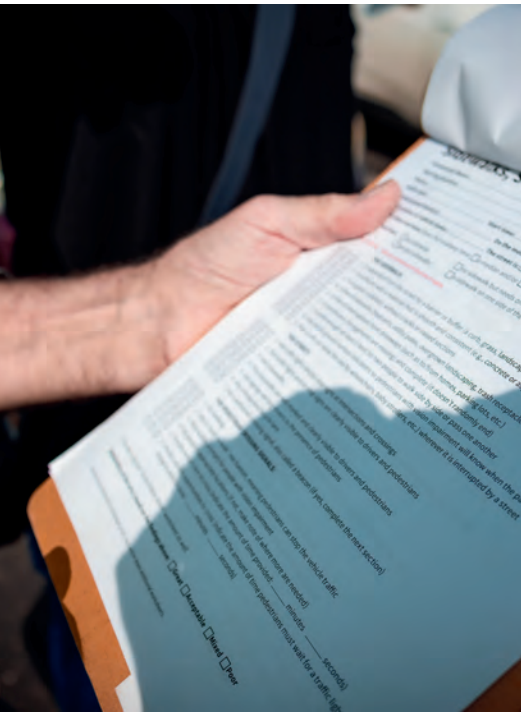




Walk Audit Report

Dave Beal
Age Friendly Olmsted County
Family Service Rochester
December 17, 2023





BACKGROUND

In January 2020, the Olmsted County Board of Commissioners voted to sponsor our community's membership in the Network of Age-Friendly States and Communities (NAFSC). In doing so, the board asked that Family Service Rochester (FSR) convene and lead the community age-friendly process including a community assessment, action plan and its implementation.

[Age-Friendly Olmsted County](#) (AFOC) is a cross-sector initiative to ensure that residents of Olmsted County have what they need to live with autonomy and dignity in all life's stages. When Olmsted County became a member of the AARP Network of Age Friendly States and Communities in early 2020, it officially joined a global movement, with roots in the World Health Organization, to help cities and communities respond to an aging population and prepare for a permanently older society.

Age-friendliness means we bring a lifespan approach to all aspects of the community. This will become increasingly important. Older adults are the fastest growing age group in the county, with the 55-plus cohort projected to increase from 19% to 30% between 2000 and 2025. By 2025, Greater Rochester will have the greatest proportion of residents ages 55 and older in the county, at nearly 39%.

Age-friendliness is inherently focused on broad and expansive inclusion. AFOC will work to ensure that we are inclusive not only of age but of income, race, ethnicity, physical or cognitive ability, geography, and other characteristics commonly tied to discrimination. AFOC aims to ensure that the interests and voices of older adults—a group which we all hope someday to be a part—are represented and inform local growth and development; and, in doing so, help Olmsted County become a place that values and empowers all of us throughout the span our lives.

Age Friendly Community Assessment: Walkability

According to the [U.S. Environmental Protection Agency](#),

Walkable neighborhoods offer a multitude of benefits to residents and the community as a whole. They encourage more physical activity, leading to improved health and longevity. They enable residents and workers to drive less, thus cutting down on pollution and noise. Additionally, walkable neighborhoods promote social interaction and a sense of community, as people are more likely to encounter their neighbors and friends when walking for exercise or to nearby services and amenities.

As an age-friendly network member, AFOC follows a five-year framework with three major stages: planning, implementation, and evaluation. A community assessment is a part of the planning stage intended to identify needs and opportunities across the county.

[The Age Friendly Olmsted County Community Assessment Report](#) was released on June 29, 2021. Several themes of interest and concern were identified, as well as a set of key findings. Among the key findings were issues related to transportation.

Being able to travel around the community is basic to autonomy, inclusion, the ability to access goods and services and to participate in community life. We need it to do the things we care about, at every age, but this can get harder in later life. The Minnesota Department of Transportation's Advancing Transportation Equity report for southeastern Minnesota found that older adults and people with disabilities face difficulties in accessing medical services, purchasing goods, and engaging in social activities. And as part of older adult listening sessions for the 2019 Community Health Needs Assessment, participants stated that a lack of accessible transportation is one of the main barriers to helping our communities be healthy.

Around half of AFOC survey respondents in Rochester say they sometimes walk to do errands or an appointment. Twenty-seven percent reported riding a bike. Residents of the county's rural communities have less opportunity to access amenities and services that way. As one put it for the 2019 CHNA, "Distance matters for access. Not everyone can walk everywhere." The ability to safely walk somewhere is also an equity issue. A lack of sidewalks, trails, or safe walking paths hinders a person's ability to walk or bicycle as a means of transportation; this includes within Rochester, too.

Additionally, general pedestrian safety is an issue, as is the need for a broader and more consistent network of well-maintained sidewalks and trails connecting neighborhoods to retail and service locations. Notably, MNDOT's Advancing Transportation Equity report on southeastern Minnesota found that most walking and biking is done for recreation (versus transportation), with participants citing winter weather, safety, and lack of trails and paths as barriers.

More than 98% of AFOC survey respondents and multiple focus group members noted the importance of having sidewalks in good repair. One-third of age-friendly survey respondents said Rochester does not have safe sidewalks. Cracked or uneven sidewalks pose risks to people who are unsteady on their feet and/or who use walkers or similar devices and deter people from walking for pleasure or transportation.

Age Friendly Action Plan: Walk Audits

The findings of the community assessment served as the basis for the development of an action plan.

[The Age-Friendly Olmsted County 2022-2025 Action Plan](#) was released in September 2021. The three-year action plan aims to create a healthy and equitable community that affords older adults and all residents the opportunity to access, engage, and participate in a shared civic, social, and economic life. The action plan lays out the goals, action items, and strategies we use to address the needs identified during the assessment phase of the age-friendly process.

Action Area III of the plan addresses age community engagement and responds to an assessment finding that older adults desire to be actively engaged in community life.

Older adults need to have opportunities to be as actively engaged in community life as they want to be. The more connected and engaged older adults are, the more likely they are to contribute their skills and time to the community.

An age-friendly community makes policy and infrastructure changes that incorporate the needs and preferences of older adults. Planning for land use, community revitalization, economic development efforts, etc. should reflect active input from a cross-section of community members that includes older adults.

This action area calls on AFOC to pursue opportunities for civic participation and influence in attitudes, policy, planning, and decision-making regarding issues, projects, and legislation that impact older adults.

Among the goals of this action area are ensuring that the needs and preferences of older residents inform the governance, growth, and development of Olmsted County and its communities; and addressing age-based barriers to opportunity and access.

Among the objectives for implementing these goals are ensuring that built environments are safe and accessible. Here the plan calls for promoting and supporting walk audits of neighborhoods and business districts. In doing so, AFOC endeavors to partner with public works, transit planners, Destination Medical Center, and business and neighborhood associations.

Walk Audits as Community Engagement and Participatory Research

Walk audits are a form of participatory research that empowers communities to actively engage in the assessment and improvement of their built environment. This method involves residents, stakeholders, and experts collectively walking through a neighborhood or urban area to evaluate its pedestrian-friendliness, safety, and overall livability.

During a walk audit, participants systematically document their observations, such as sidewalk quality, crosswalks, traffic flow, signage, and the presence of amenities like benches or bike racks. This grassroots approach encourages community members to voice their concerns and ideas for enhancing their surroundings. It can be particularly valuable for addressing issues like accessibility, social inclusion, and environmental sustainability.

By involving the community in the research process, walk audits promote social cohesion, foster a sense of ownership, and lead to more contextually informed urban planning and policy decisions. This method serves as a bottom-up approach that complements top-down planning strategies and ensures that the urban environment better reflects the needs and desires of those who inhabit it.

In an era of increasing urbanization and a growing focus on pedestrian-friendly cities, walk audits are a vital tool for ensuring that public spaces are designed with the community's best interests in mind, ultimately fostering healthier, more vibrant, and more inclusive communities.

Walk audits as a form of participatory research hold significant benefits for older adults, as they cater to their unique needs and concerns. Some key advantages:

Safety Enhancement: Older adults often face safety challenges when navigating their communities. Walk audits can identify safety hazards such as uneven sidewalks, poorly marked crosswalks, or inadequate lighting, resulting in safer environments for seniors.

Accessibility Improvements: Older adults may have mobility issues or require the use of mobility aids like wheelchairs or walkers. Walk audits can pinpoint areas where accessibility modifications are needed, such as curb cuts or ramps, making neighborhoods more age friendly.

Social Engagement: Participating in walk audits fosters social engagement and a sense of community among older adults. It provides them with an opportunity to connect with neighbors, share experiences, and collaborate on making positive changes to their surroundings.

Health and Well-being: Walking is a low-impact exercise that can benefit older adults' physical and mental health. An age-friendly, pedestrian-friendly environment encourages outdoor activity, reducing the risk of social isolation and improving overall well-being.

Empowerment: Older adults are often marginalized in urban planning. Participating in walk audits empowers them to have a voice in shaping their communities, leading to better outcomes that reflect their needs and preferences.

Transportation Options: Walk audits can highlight transportation barriers and gaps in public transit, leading to improved transportation options for older adults who may rely on these services to remain independent.

Community Building: The collaborative nature of walk audits promotes intergenerational collaboration and understanding, fostering a stronger sense of community, and bridging generational gaps.

Walk audits as a form of participatory research provide a platform for older adults to actively engage in shaping their living environments, resulting in safer, more accessible, and age-friendly neighborhoods that enhance their quality of life and overall well-being.

2023 AARP Community Challenge Grants: Implementing Walk Audits

The [AARP Community Challenge](#) provides small grants to fund quick-action projects that can help communities become more livable for people of all ages. In 2023, the AARP Community Challenge accepted applications across three different grant opportunities, two of which were new - among those capacity-building microgrants to implement a walk audit to assess and

enhance the safety and walkability of a street or neighborhood with support from [America Walks](#), using the [AARP Walk Audit Tool Kit](#).

In early 2023, working with the City of Rochester Departments of Community Development and Public Works, AFOC/FSR applied for a walkability microgrant to conduct a walk audit in a Rochester neighborhood.

The goals of our walk audit project were to:

- Improve pedestrian safety by enhancing walkability and accessibility with age friendly.
- Promote community engagement, collaboration, and Intergenerational connectivity.
- Coordinate with city public works department's sidewalk improvement district program (SIDP) and the community development department's active transportation plan (ATP).
- Establish partnerships for incorporating walk audits into SIDP, ATP, and other community projects and initiatives.

Since this would be the first walk audit conducted in Rochester and Olmsted County, we also regarded this effort as a pilot/demonstration project,

AFOC/FSR was awarded the grant with an effective date of June 28, 2023. Ian Thomas, State and Local Program Director at America Walks, was assigned as our project mentor.

2023 SLATTERLY PARK WALK AUDIT

The requirements of the grant called for the completion of the project by November 30, 2023, with the submission of a after action report by December 31, 2023. Our schedule set a starting date of July 2, 2023, with the walk audit occurring on September 9, 2023. Following the audit there would be a presentation to a city council study session that was subsequently scheduled for October 16, 2023.

Planning Team

A planning team was convened. Over the course of the 10 weeks prior to walk audit, this team worked to identify routes, review AARP walk audit materials, recruit team leaders and walk audit volunteers, and prepare for the walk audit event.

Members included:

Dave Beal
Age Friendly Olmsted County

Rene Halasy
RNeighbors

Brenda Chilman
Family Service Rochester

Tyler Spies
Rochester Public Works

Cathy Clermont
Slatterly Park Neighbor Association

Matthew Tse
Rochester Community Development

Route Selection

The grant called for conducting 12 walk audits. Rather than do so over a series of dates, the team decided to conduct all of the audits in the neighborhood on a single day. Planning then entailed working with public works and neighborhood representatives to identify twelve routes within the Slattery Park Neighborhood (as defined by the boundaries of the neighborhood association) in southeast Rochester.

Because of its location near the city core, residents not only walk for health and recreation, but also as a means of transportation. Routes were selected to sample the neighborhood, resident destinations including schools, shopping, appointments, and the like. Criteria for route selection also included major streets, known areas of concern, and a city park residents use and cross to reach some destinations. Routes were also to be established that would allow for an audit to be completed in around an hour.

Public works provide maps to support this process and initially offered 15 routes based on the criteria. These were reviewed by the neighborhood representatives and the planning group. With slight changes, 12 were selected.

Volunteer Recruitment

The plan was to have each route audited by a team of 3-5 volunteers facilitated by a team leader familiar with the route and the AARP walk audit materials. As the routes were being selected, efforts were underway to recruit 12 team leaders and 36 – 60 volunteers.

Job descriptions were written for both team leaders and walk audit volunteers. Members of the planning group identified likely team leader prospects. These prospects were then contacted with an ask to participate. A general call for volunteers was distributed through planning team email networks and social media.

AARP Minnesota also supported recruitment efforts among their local membership. We Bike Rochester promoted the event and provided several of our team leaders. There was also some earned media and promotion by other organizations who picked up on and supported the event via social media.

Volunteers were recruited from throughout the city and county.

An online form was used to register volunteers. The form asked for contact information and demographic data and included liability and media statements.

Team leaders were all recruited prior to their participation in an orientation session led by Ian Thomas on August 31, 2023. Walk audit volunteers were recruited up until the morning of the event. In addition to the 12 team leaders, 89 volunteers registered for the event of whom 83 participated on the day of the event.

The 97 participants – team leaders, walk auditors, and 2 shuttle drivers – included persons reporting vision and mobility impairments, ages ranged from 1 through 80+ (30% age 50+), couples, families, and a scout troop.

Our Slatterly Park 2023 Walk Audit Team Leaders were:

Dave Beal Age Friendly Olmsted County	Lindsey LeGette Charter House
Cathy Clermont Slatterly Park Neighbor Association	Nick Miller We Bike Rochester
Emily Doskey We Bike Rochester	Erik Noonan We Bike Rochester
Rene Halasy RNeighbors	Jennifer Pinske Family Service Rochester
Genevieve Hulsing Slatterly Park Neighbor Association	Ian Thomas America Walks
Jo Anne Judge-Dietz Olmsted County Public Health	Jessica Thornton Age Friendly Pine Island

Walk Audit Event: Saturday, September 9, 2023

By prior arrangement, the parking lot of the Redeemer Lutheran Church – centrally located in the neighborhood – was designated as our staging area for the walk audit. We had scheduled the audit for early September, after Labor Day, to try to catch some good weather and families settled in for the start of the school year. Though we did set a rain check, the weather was sunny and warm.

Volunteers were asked to arrive around 10am to sign-in, at which time they received a t-shirt, other swag, and their walk audit worksheets.

The planning team had decided to make use of three of the AARP Walk Audit Work sheets: Sidewalks. Streets and Crossing; Street Safety and Appeal; and Summary. All participants received copies for their reference. They were invited to complete the sheets if they wanted to do so., but the team’s audit observations and scores would be reported out as a group by the team leader.

Based on the registrations, teams had been formed. On the morning of the audit these teams were adjusted for no shows and same day registrations. Team leaders arranged themselves around the parking lot and using signs with the color codes of their teams, gathered their small groups together. They then briefed their team on the materials, routes, and the conduct of their audits.

Following a brief welcome and general instructions, the teams departed for the starting points of their route at around 10:30am. Four routes were deemed far enough away from the staging area to benefit from a shuttle to save time. The goal was to begin the audits by no later than 11am.

Each team spent about an hour walking routes of about a mile. As they walked, guided by the worksheets, they made observations and discussed what they saw. At the conclusion of their route, they came to a general view of the walkability of their route which was recorded by their team leader using the worksheets that had guided their observations and discussions. Many teams also took photos along their routes to illustrate what they were seeing.

After the walk audit, participants were invited to attend a post-audit event hosted by We Bike Rochester at the nearby La Michoacana Purepecha ice cream shop just a few blocks away. Approximately 50 participants attended, enjoying a free treat, and sharing their walk audit experience.

On Monday October 16th, planning team members Dave Beal and Matthew Tse reported on the event at a study session of the Rochester City Council.

Walk Audit Results

According to the [AARP Livability Index Neighborhood Map](#), the area encompassed by the walk audit is scored from 6.50 – 8.67 based on walkability data pulled from the U.S. Environmental Protection Agency’s National Walkability Index (June 2021). The U.S. EPA assesses the walkability of neighborhoods based on measures known to influence the likelihood of people walking as a means of transportation: street intersection density, proximity to transit stops, and diversity of land uses. The EPA index scores walkability as follows:

Score Range	Walkability Category
1 - 5.75	Least Walkable
5.76 - 10.50	Below Average Walkable
10.51 - 15.25	Above Average Walkable
15.26 - 20	Most Walkable

Using this national measure, the Slattery Park Neighborhood would rank as Below Average Walkable.

There is no clear guidance on how Livability/EPA indices scoring might translate into the general ratings employed by the AARP Walk Audit worksheets (Great =very pedestrian-friendly and safe; Acceptable =mostly pedestrian-friendly and safe; Mixed = somewhat pedestrian-friendly and safe; Poor = absolutely not pedestrian-friendly or safe). However, the overview of the 12 route ratings (see Route Ratings Overview) does not seem inconsistent with the national score.

As mentioned above, the walk audit made use of three AARP Walk Audit Work sheets: Sidewalks, Streets and Crossing; Street Safety and Appeal; and Summary. At the conclusion of

the audit, each team leader submitted worksheets that represented the consensus view of their team along with comments. Copies of these worksheets and any comments are provided in the next section of this report.

As the Route Ratings Overview suggests, the neighborhood does not present a uniform walking experience. This overview probably reflects the diversity of routes included in the audit. Despite this diversity, there were similar observations across the neighborhood (see Walk Audit Images).

1. Sidewalks
 - a. Trip hazards from vegetation growing through seams and cracks.
 - b. Shrubbery growing into/overhanging sidewalk.
 - c. Significant lack of edging narrowing sidewalk.
 - d. Sections of sidewalks in poor physical condition – uneven seams, cracks.
 - e. Some portions of the neighborhood are without sidewalks.
2. Curb Cuts
 - a. Positioned in middle of the curb taking pedestrians into the street to enter crosswalks.
 - b. Some are too steep presenting challenges for persons with mobility issues and strollers.
 - c. Many intersections without curb cuts at all for corners.
3. Crosswalks
 - a. Most street crossings are unmarked with crosswalks.

Route Work Sheets and Walk Audit Images

The next two sections of the report include copies of the team worksheets and a collection of images from the various walk audits. Though each team used and submitted the same set of worksheets, there was some variation among teams regarding their submissions. In the next section that variation is apparent in how some teams provided additional observations and images.

Last minute rescheduling related to the shuttles resulted in Route 3 being audited by two teams. The worksheets from one group is provided along with the additional images and observations provided by the other team.

The Route 4 team concluded that two portions of their route were sufficiently different to benefit from submitting two separate sets of worksheets (12th St SE/Hwy 14 and 11th Ave SE/Hwy 14).

The final section is a collection of images from throughout the neighborhood.

CONCLUSION

This report will be submitted to City of Rochester Public Works and Community Development Active Transportation staff. Though the general findings of the audit are suggestive of specific

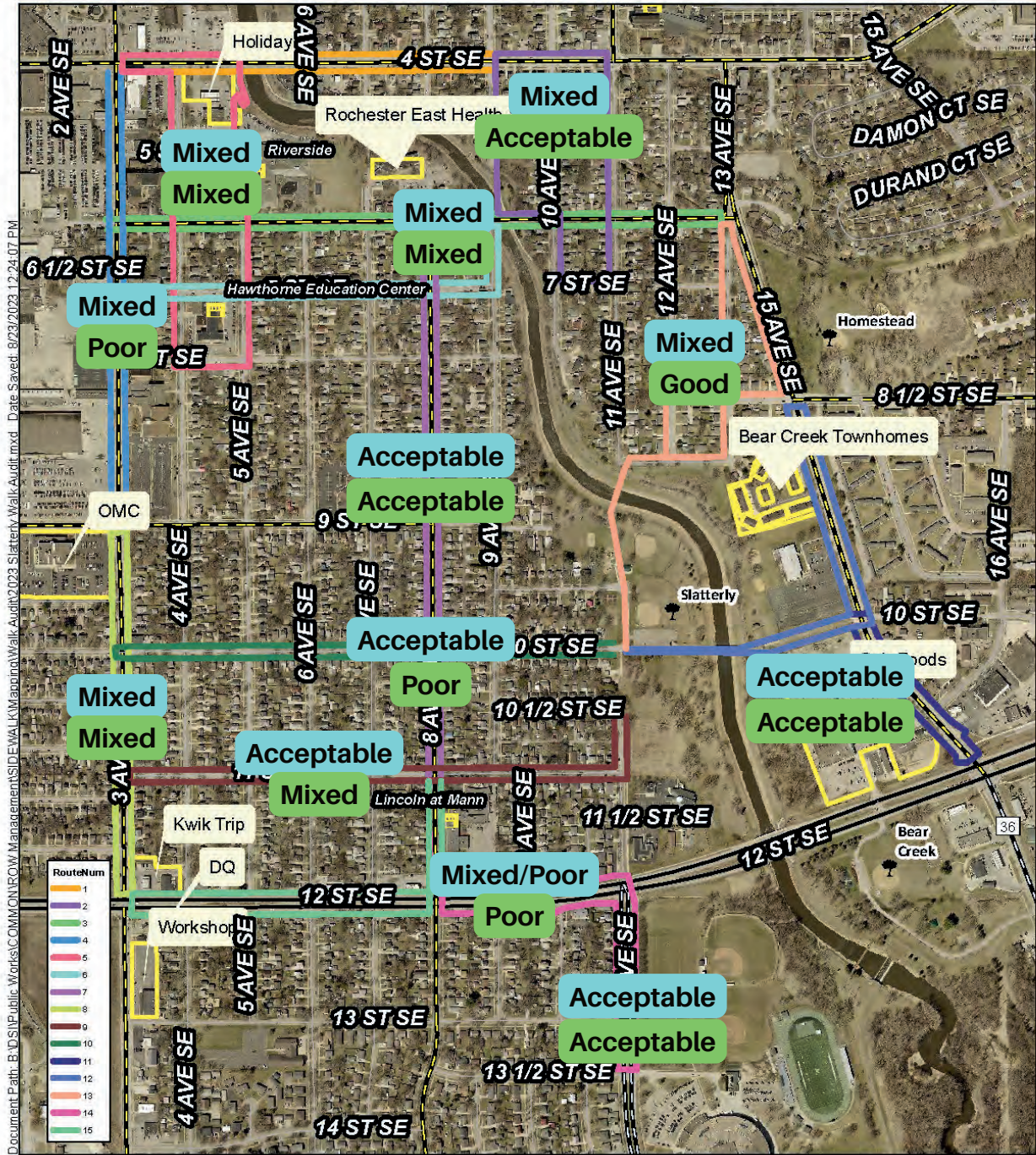
remedies, the report contains no specific recommendations for city staff. In keeping the pilot/demonstration goals of this walk audit project, there will be follow-up with city staff and other community interests. Portions of this report were part of the October city council study session presentation.

Copies will be distributed to all the participants of the walk audit. This report will be available at <https://familyservicerochester.org/Age-Friendly-Olmsted-County>.

Other walk audits conducted with the support of the AARP Community Challenge Grant in 2023 have reported the high level of interest and participation by residents. That was certainly the case in the Slatterly Park Neighborhood walk audit.

As noted earlier in this report, walk audits empower communities to actively engage in the assessment and improvement of their built environment. Walk audits promote social cohesion, foster a sense of ownership, and lead to more contextually informed urban planning and policy decisions. This bottom-up approach complements top-down planning strategies and ensures that the urban environment better reflects the needs and desires of those who inhabit it.

Route Ratings Overview



Slatterly Park Walk Audit - 2023 Route Options

Street Safety and Appeal



Great = very pedestrian-friendly and safe

Sidewalks, Streets, and Crossings



Acceptable = mostly pedestrian-friendly and safe

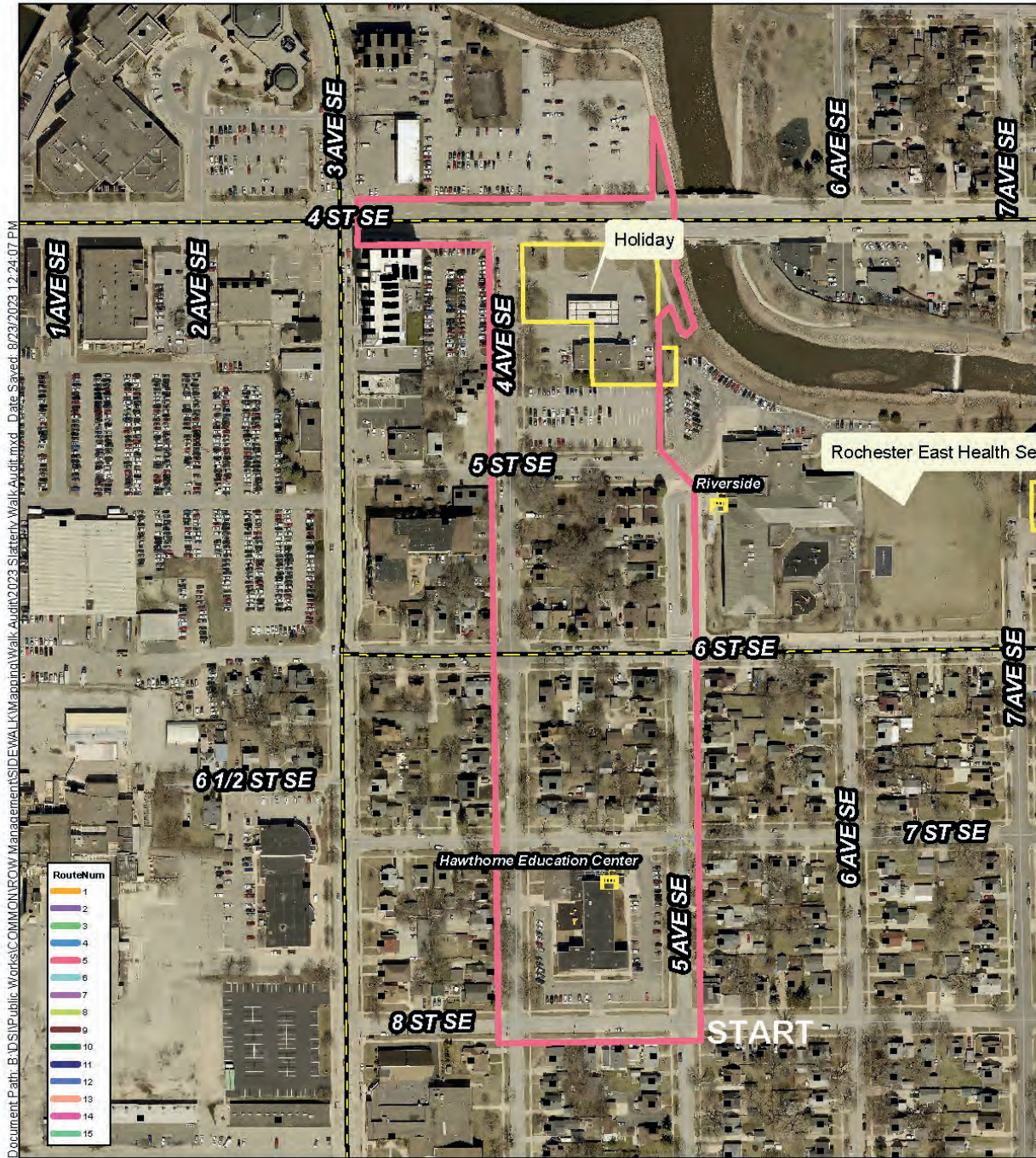
Mixed = somewhat pedestrian-friendly and safe

Poor = absolutely not pedestrian-friendly or safe



Route Work Sheets

Route 1



4 Ave SE/5 Ave SE Loop - Riverside



Data contained has not been field verified and should be used as reference only. It is the user's responsibility for field verifying elevations, locations, dimensions, etc. to conduct detailed design.

The City of Rochester specifically disclaims all warranties, express or implied, including but not limited to implied warranties of fitness for a particular purpose, with respect to the information contained on this map. The City of Rochester shall have no liability with respect to any loss or damage directly or indirectly arising out of the use of this data.

Sidewalks, Streets and Crossings WALKING AUDIT

Community Name: Slatterly Park Neighborhood

Starting location: 8th St SE/5th Ave SE **Ending location:** 8th St SE/5th Ave SE

Route: 4th Ave SE - 5th Ave SE Loop

Audit date: 9/9/23 **Start time:** 11:45am **AM | PM** **End time:** 12:30pm **AM | PM**

Posted speed limit(s): 30mph **Do the motorists appear to be obeying the speed limit(s)?** no

Total number of vehicle lanes: varied **The street is:** one-way | two-way

If more than one lane: Does the roadway have a median and/or a pedestrian island?

The street has: no sidewalk no sidewalk but needs one no sidewalk but needs two
 partial sidewalks a sidewalk on one side of the street sidewalks on both sides of the street

YES | NO | OTHER Skip any statements that don't apply

THE SIDEWALK:

- 1. Is separated from the street by a barrier or buffer (a curb, grass, landscaping)
- 2. Is surfaced with a material that is smooth and consistent (e.g., concrete or asphalt rather than bricks)
- 3. Is in good condition, without cracks or raised sections
- 4. Is free of obstacles (hydrants, utility poles, overgrown landscaping, trash receptacles)
- 5. Is free of interruptions from driveways (such as to/from homes, parking lots, etc.)
- 6. Is continuous (no segments are missing) and complete (it doesn't randomly end)
- 7. Is wide enough (at least 5 feet) for two people to walk side by side or pass one another
- 8. Has tactile ground surface indicators so pedestrians with vision impairment will know when the path is ending
- 9. Has a curb cut ramp (for use by wheelchairs, baby strollers, etc.) wherever it is interrupted by a street

THE STREET:

- 1. Has traffic lights and/or stop signs at intersections and crossings
- 2. The traffic lights and/or stop signs are clearly visible to drivers and pedestrians
- 3. Has crosswalks
- 4. The crosswalks are well marked and clearly visible to drivers and pedestrians
- 5. Has signage alerting drivers to the presence of pedestrians
- 6. Has a designated bicycle lane
- 7. Has a pedestrian crossing signal, also called a beacon (if yes, complete the next section)

THE PEDESTRIAN CROSSING SIGNALS:

- 1. Are working
- 2. Have a "push-to-walk" mechanism, meaning pedestrians can stop the vehicle traffic
- 3. Have audible prompts for people with vision impairment
- 4. Are placed in appropriate locations (if not, make note of where more are needed)
- 5. Provide enough time to cross (indicate the amount of time provided: _____ minutes _____ seconds)
- 6. Provide suitable opportunities to cross (indicate the amount of time pedestrians must wait for a traffic light change in order to cross: _____ minutes _____ seconds)

Consider using the "Build a Better Block" worksheet as well.

Walkability of the area, based on the findings above: Great Acceptable Mixed Poor

Street Safety and Appeal

Community Name: Slatterly Park Neighborhood

Location/Street Name(s): 4th Ave SE - 5th Ave SE Loop

Audit date: 9/9/23 Start time: 11:45am AM | PM End time: 12:30pm AM | PM

YES | NO | OTHER Skip any statements that don't apply

THE LOCATION HAS:

- 1. Places to sit
- 2. Shade trees
- 3. Grass, flowers and landscaping (if yes, is the greenery well maintained? _____)
- 4. Awnings, outdoor umbrellas or other shelter from rain and other weather conditions
- 5. Drinking fountains (if yes, are they working and clean? _____)
- 6. Public restrooms (if yes, are they clean and safe? Holiday Station _____)
- 7. A transit or bus shelter (if yes, is there seating? _____)
- 8. Trash receptacles (if yes, do they appear to be regularly emptied?)
- 9. Buildings and/or homes that are well-maintained
- 10. Informative signage
- 11. Well-placed signage
- 12. Streetscape features (art, signage, etc.) that are representative of/suitable for the community
- 13. Pedestrian-scaled lighting
- 14. A posted speed limit that seems suitable (if yes, does it appear that drivers are obeying the limit? _____)

IMPRESSIONS:

- 1. The location/street is a safe and appealing destination
- 2. The location/street is a safe and appealing travel route
- 3. The location/street appears to be safe for users of all ages, abilities, races, income levels, etc.
- 4. The location/street appears to be safe for pedestrians during both the day and night
- 5. Pedestrians appear to be safe from moving vehicles
- 6. Pedestrians appear to be safe from crime, harassment or similar threats

For "No" or "Other" answers, use the space below or on the back of this worksheet to briefly explain the response.

NOTES OR OTHER OBSERVATIONS:

Walkability of the area, based on the findings above: Great Acceptable Mixed Poor

Summary

Record the score totals for each observation type

- Record the total number of yes responses for the category
- Record the total number of no responses for the category
- Record the one-word rating for the category

This information — as well as all notes, photographs, videos and observation discussions — will be helpful for writing a short report and/or preparing a PowerPoint presentation.

Community Name: Slatterly Park Neighborhood

Street/Intersection Observed: 4th Ave SE - 5th Ave SE Loop and _____

Audit Date: 9/9/23

WORKSHEET	YES RESPONSES	NO RESPONSES	RATING <small>Great Acceptable Mixed Poor</small>
Sidewalks, Streets and Crossings (Single-Location Audit)	NA	NA	NA
Sidewalks, Streets and Crossings (Walking Audit)	6	14	MIXED
Sidewalks	5	14	MIXED
Streets and Crossings	1	10	POOR
Street Safety and Appeal	13	6	MIXED
Public Transit Access	UNSURE	UNSURE	UNSURE

NOTES OR OTHER OBSERVATIONS:

ROUTE 1 NOTES OR OTHER OBSERVATIONS

On the bridge near the Holiday Station there are planters near the railings that actually push people closer to traffic. We witnessed a biker trying to bike across and it looked like he was close to traffic and hard to maneuver.

There was a lot of foot traffic. We assumed at night there is even more as there is the Holiday Station, Public Library, overnight and day shelter all within proximity.

The intersection near Riverside School is a mess. It looked like they did what they could near parking and buses, but it did not look safe. Not clearly marked crossing and hard to maneuver if in a wheelchair, scooter, or walker or stroller, etc.

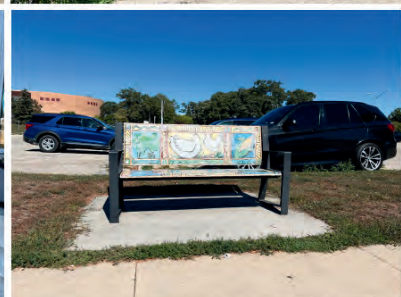
Public transit was marked, but it may have been old signage. Did not witness any buses.

This route had several interesting intersections and sidewalks. 5 corner intersections, one way traffic, school, parking lots, Holiday Station, bridge, etc.

Artwork



Seating



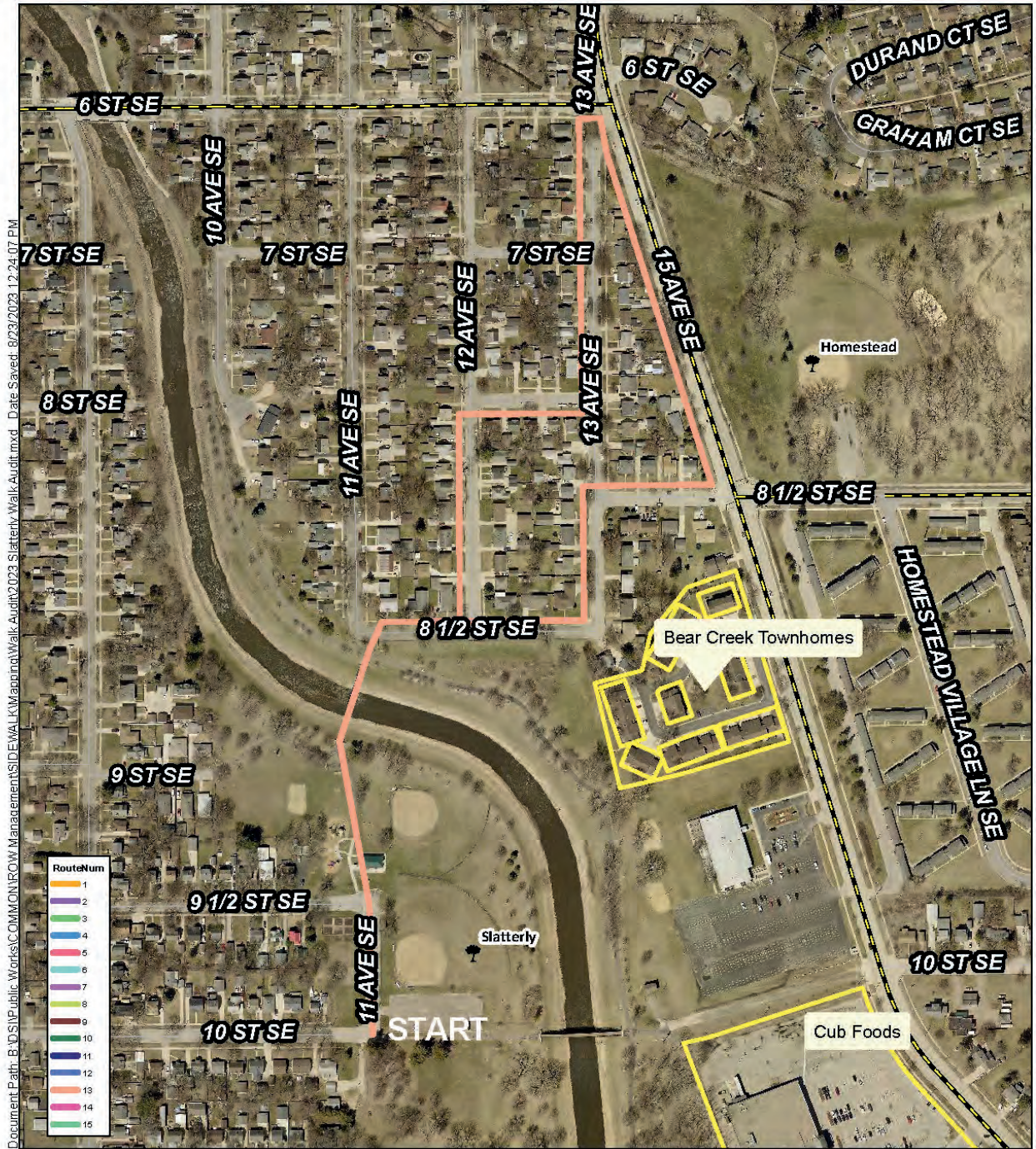
Sidewalk Conditions



Other Photos



Route 2



Slatterly Park to 13 Ave & 6 ST Loop



Data contained has not been field verified and should be used as reference only. It is the user's responsibility for field verifying elevations, locations, dimensions, etc. to conduct detailed design.

The City of Rochester specifically disclaims all warranties, express or implied, including but not limited to implied warranties of fitness for a particular purpose, with respect to the information contained on this map. The City of Rochester shall have no liability with respect to any loss or damage directly or indirectly arising out of the use of this data.

Street Safety and Appeal

Community Name: Slatterly Park Neighborhood

Location/Street Name(s): 13th Ave SE/ 6th St SE Loop

Audit date: 9/9/23 Start time: 10am AM | PM End time: 12:15pm AM | PM

YES | NO | OTHER Skip any statements that don't apply

THE LOCATION HAS:

- 1. Places to sit
- 2. Shade trees
- 3. Grass, flowers and landscaping (if yes, is the greenery well maintained? _____)
- 4. Awnings, outdoor umbrellas or other shelter from rain and other weather conditions
- 5. Drinking fountains (if yes, are they working and clean? _____)
- 6. Public restrooms (if yes, are they clean and safe? _____)
- 7. A transit or bus shelter (if yes, is there seating? _____)
- 8. Trash receptacles (if yes, do they appear to be regularly emptied?)
- 9. Buildings and/or homes that are well-maintained
- 10. Informative signage
- 11. Well-placed signage
- 12. Streetscape features (art, signage, etc.) that are representative of/suitable for the community
- 13. Pedestrian-scaled lighting
- 14. A posted speed limit that seems suitable (if yes, does it appear that drivers are obeying the limit? _____)

IMPRESSIONS:

- 1. The location/street is a safe and appealing destination
- 2. The location/street is a safe and appealing travel route
- 3. The location/street appears to be safe for users of all ages, abilities, races, income levels, etc.
- 4. The location/street appears to be safe for pedestrians during both the day and night
- 5. Pedestrians appear to be safe from moving vehicles
- 6. Pedestrians appear to be safe from crime, harassment or similar threats

For "No" or "Other" answers, use the space below or on the back of this worksheet to briefly explain the response.

NOTES OR OTHER OBSERVATIONS:

Walkability of the area, based on the findings above: Great Acceptable Mixed Poor

Sidewalks, Streets and Crossings WALKING AUDIT

Community Name: Slatterly Park Neighborhood

Starting location: 11th Ave SE/10th St SE **Ending location:** 1th Ave SE/10th St SE

Route: 13th Ave SE/ 6th St SE Loop

Audit date: 9/9/23 **Start time:** 10am **AM | PM** **End time:** 12/15pm **AM | PM**

Posted speed limit(s): _____ **Do the motorists appear to be obeying the speed limit(s)?** _____

Total number of vehicle lanes: 2-4 **The street is:** one-way | two-way

If more than one lane: Does the roadway have a median and/or a pedestrian island?

The street has: no sidewalk no sidewalk but needs one no sidewalk but needs two
 partial sidewalks a sidewalk on one side of the street sidewalks on both sides of the street

YES | NO | OTHER Skip any statements that don't apply

THE SIDEWALK:

- 1. Is separated from the street by a barrier or buffer (a curb, grass, landscaping)
- 2. Is surfaced with a material that is smooth and consistent (e.g., concrete or asphalt rather than bricks)
- 3. Is in good condition, without cracks or raised sections
- 4. Is free of obstacles (hydrants, utility poles, overgrown landscaping, trash receptacles)
- 5. Is free of interruptions from driveways (such as to/from homes, parking lots, etc.)
- 6. Is continuous (no segments are missing) and complete (it doesn't randomly end)
- 7. Is wide enough (at least 5 feet) for two people to walk side by side or pass one another
- 8. Has tactile ground surface indicators so pedestrians with vision impairment will know when the path is ending
- 9. Has a curb cut ramp (for use by wheelchairs, baby strollers, etc.) wherever it is interrupted by a street

THE STREET:

- 1. Has traffic lights and/or stop signs at intersections and crossings
- 2. The traffic lights and/or stop signs are clearly visible to drivers and pedestrians
- 3. Has crosswalks
- 4. The crosswalks are well marked and clearly visible to drivers and pedestrians
- 5. Has signage alerting drivers to the presence of pedestrians
- 6. Has a designated bicycle lane
- 7. Has a pedestrian crossing signal, also called a beacon (if yes, complete the next section)

THE PEDESTRIAN CROSSING SIGNALS:

- 1. Are working
- 2. Have a "push-to-walk" mechanism, meaning pedestrians can stop the vehicle traffic
- 3. Have audible prompts for people with vision impairment
- 4. Are placed in appropriate locations (if not, make note of where more are needed)
- 5. Provide enough time to cross (indicate the amount of time provided: _____ minutes _____ seconds)
- 6. Provide suitable opportunities to cross (indicate the amount of time pedestrians must wait for a traffic light change in order to cross: _____ minutes _____ seconds)

Consider using the "Build a Better Block" worksheet as well.

Walkability of the area, based on the findings above: Great Acceptable Mixed Poor

Summary

Record the score totals for each observation type

- Record the total number of yes responses for the category
- Record the total number of no responses for the category
- Record the one-word rating for the category

This information — as well as all notes, photographs, videos and observation discussions — will be helpful for writing a short report and/or preparing a PowerPoint presentation.

Community Name: Slatterly Park Neighborhood

Street/Intersection Observed: 13th Ave SE/ 6th St SE Loop and _____

Audit Date: 9/9/23

WORKSHEET	YES RESPONSES	NO RESPONSES	RATING <small>Great Acceptable Mixed Poor</small>
Sidewalks, Streets and Crossings (Single-Location Audit)	NA	NA	GOOD
Sidewalks, Streets and Crossings (Walking Audit)	7	6 NO/10 OTHER	MIXED
Sidewalks	3	3 NO/4 OTHER	GOOD SEE COMMENTS
Streets and Crossings	4	3 NO/10 OTHER	MIXED SEE COMMENTS
Street Safety and Appeal	11	5 NO/3 OTHER	GOOD
Public Transit Access	8	3 NO/3 OTHER	MIXED

NOTES OR OTHER OBSERVATIONS:

ROUTE 2 NOTES AND OTHER OBSERVATIONS

Positives: Slatterly Park had a nice playground and different areas for family and friends to gather. (playground, benches, horseshoes, baseball field, frisbee golf). Lots of Beautiful art and bike paths that connected through the town. Many of the sidewalk sections have recently been redone and evened out.

Opportunities: Grass overgrown onto many of the sidewalks and weeds into between sections.

Observations from Team Scouts(Green):

We can divide our route into 2 sections.

- 1) Walking from the Parking lot at Slatterly Park to 15th Ave
- 2) Walking along 15th Ave from 10th St to 8 1/2th St and back

Section 1: Crossing the Pedestrian Bridge over Bear Creek has boards in good condition but they are uneven and require careful footing. We did note the multiple Pedestrian bridges connecting the East and West Banks of the river and felt these were an adequate distance apart for connectivity.

The multipurpose path narrows to a concrete sidewalk. The walkers were concerned about bike traffic riding this sidewalk along with pedestrians.



The sidewalk heading East to 15th Ave is narrow and overgrown with weeds. There is dirt washed on top of it. The walkers said "It feels like we shouldn't be here". The landscaping felt unmaintained and even the trees planted in the last 2 years were dying from drought. There was a lot of litter. There was a large berm separating the sidewalk from Cub Foods. A desire path headed over the berm to connect residents to the Grocery store. The Berm ran the length of the sidewalk until reaching 15th Ave.



The sidewalk ran along side a street that appeared to be a public right of way (10th St). It is in rough shape and unsuitable for bicycle traffic or Pedestrians with the worn asphalt. It only leads to the park and is likely only used by Law enforcement and Parks Dept Staff however there was a private car parked here. This leads to the unloved feel of this section of sidewalk.



There was a covered bus shelter on 15th Ave in use.

We arrived at 15th Ave and witnessed 3 separate groups crossing the busy road here in less than 10 minutes. One was a woman with a child in a stroller heading to the store. We crossed here and found it very difficult to see around the bend in the road. Even when we thought the crossing was clear, a car turning onto 15th from a nearby parking lot had to stop in the road for us to finish crossing. The walkers thought this would be a good site for flashing pedestrian signals. With the bend in the road, this might not be the best tool. We witnessed cars driving at about 40MPH which is the posted speed limit here. We questioned the need for a 40mph speed limit when the road ends within a few blocks to the north.



Section 2:



The sidewalks heading on both sides of 15th Ave were in good physical shape. The curb cuts were centered in the corner and lead directly into this busy street. There was evidence of scrapes from scooters bottoming out on the steep ramps.



The route had some trees. The trees were often Crabapple, smaller and able to grow under the overhead powerlines. They did not provide much shade. There were hedges on the East side of 15th Ave that had overgrown the sidewalk. Some trees had low hanging branches as well. The walkers said the hedges did a good job of sheltering the townhomes from the street noise but also allowed litter to become stuck and places for people to hide if it were dark out. They didn't feel safe with the hedges this close to the sidewalk. The East side also had narrower boulevard greenspace that felt less safe with the traffic.

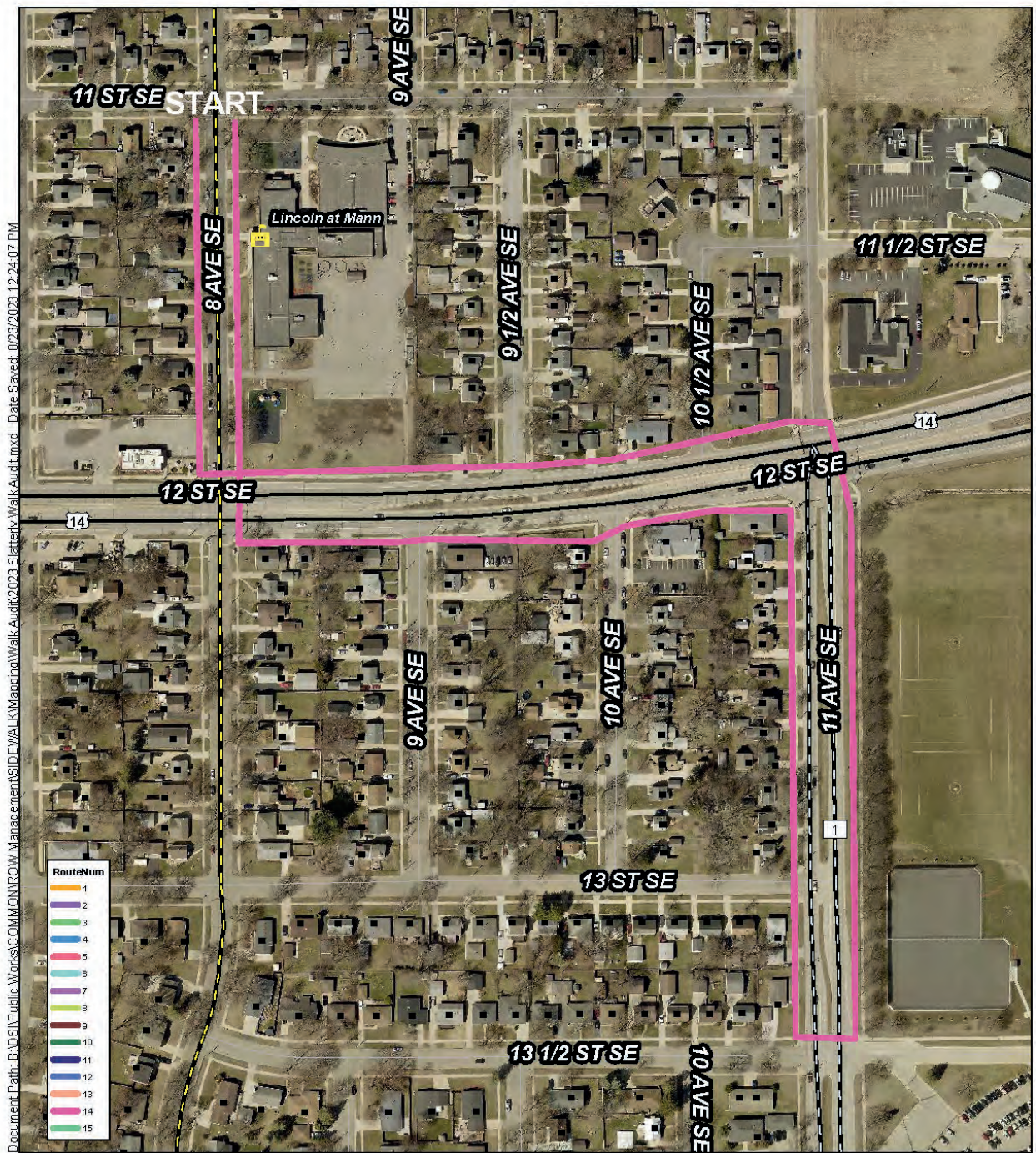
There were no benches on this route. Only Bus shelter on the west side of 15th Ave at 10th St. There were no bike lanes or bike trail connecting the trail at 8 1/2th St to the south and the Grocery store. There was a signed but not pavement marked bike route heading east into Slatterly park from the Multipurpose trail at 8 1/2th St and 15th Ave.

Overall, the walkers complained about the noise on 15ht Ave. It was decidedly louder due to traffic than the first section we walked.

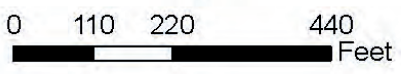


The intersection at 8 1/2th St and 15th Ave had a push-to-cross button. It was not an audible signal. The crosswalk lines were worn off and did not align with the curb cuts. The curb cuts were again diagonal and not easily navigated by people with a visual impairment. We had no issue crossing the street in time during the signal.

Route 4



Lincoln to Mayo



Data contained has not been field verified and should be used as reference only. It is the user's responsibility for field verifying elevations, locations, dimensions, etc. to conduct detailed design.

The City of Rochester specifically disclaims all warranties, express or implied, including but not limited to implied warranties of fitness for a particular purpose, with respect to the information contained on this map. The City of Rochester shall have no liability with respect to any loss or damage directly or indirectly arising out of the use of this data.

Sidewalks, Streets and Crossings WALKING AUDIT

Community Name: Slatterly Park Neighborhood

Starting location: Lincoln k-8 **Ending location:** Mayo High School

Route: Lincoln - Mayo 12th St SE/Hwy 14

Audit date: 9/9/23 **Start time:** 10am **AM | PM** **End time:** 11am **AM | PM**

Posted speed limit(s): 40 **Do the motorists appear to be obeying the speed limit(s)?** no

Total number of vehicle lanes: 4 + turn lanes **The street is:** one-way | two-way

If more than one lane: Does the roadway have a median and/or a pedestrian island?

The street has: no sidewalk no sidewalk but needs one no sidewalk but needs two
 partial sidewalks a sidewalk on one side of the street sidewalks on both sides of the street

YES | NO | OTHER Skip any statements that don't apply

THE SIDEWALK:

- 1. Is separated from the street by a barrier or buffer (a curb, grass, landscaping)
- 2. Is surfaced with a material that is smooth and consistent (e.g., concrete or asphalt rather than bricks)
- 3. Is in good condition, without cracks or raised sections
- 4. Is free of obstacles (hydrants, utility poles, overgrown landscaping, trash receptacles)
- 5. Is free of interruptions from driveways (such as to/from homes, parking lots, etc.)
- 6. Is continuous (no segments are missing) and complete (it doesn't randomly end)
- 7. Is wide enough (at least 5 feet) for two people to walk side by side or pass one another
- 8. Has tactile ground surface indicators so pedestrians with vision impairment will know when the path is ending
- 9. Has a curb cut ramp (for use by wheelchairs, baby strollers, etc.) wherever it is interrupted by a street

THE STREET:

- 1. Has traffic lights and/or stop signs at intersections and crossings
- 2. The traffic lights and/or stop signs are clearly visible to drivers and pedestrians
- 3. Has crosswalks
- 4. The crosswalks are well marked and clearly visible to drivers and pedestrians
- 5. Has signage alerting drivers to the presence of pedestrians
- 6. Has a designated bicycle lane
- 7. Has a pedestrian crossing signal, also called a beacon (if yes, complete the next section)

THE PEDESTRIAN CROSSING SIGNALS:

- 1. Are working
- 2. Have a "push-to-walk" mechanism, meaning pedestrians can stop the vehicle traffic
- 3. Have audible prompts for people with vision impairment
- 4. Are placed in appropriate locations (if not, make note of where more are needed)
- 5. Provide enough time to cross (indicate the amount of time provided: _____ minutes _____ seconds)
- 6. Provide suitable opportunities to cross (indicate the amount of time pedestrians must wait for a traffic light change in order to cross: _____ minutes _____ seconds)

Consider using the "Build a Better Block" worksheet as well.

Walkability of the area, based on the findings above: Great Acceptable Mixed Poor

Street Safety and Appeal

Community Name: Slatterly Park Neighborhood

Location/Street Name(s): 12th St SE/ Hwy 14

Audit date: 9/9/23 Start time: 10am AM | PM End time: 11am AM | PM

YES | NO | OTHER Skip any statements that don't apply

THE LOCATION HAS:

- 1. Places to sit
- 2. Shade trees
- 3. Grass, flowers and landscaping (if yes, is the greenery well maintained? _____)
- 4. Awnings, outdoor umbrellas or other shelter from rain and other weather conditions
- 5. Drinking fountains (if yes, are they working and clean? _____)
- 6. Public restrooms (if yes, are they clean and safe? _____)
- 7. A transit or bus shelter (if yes, is there seating? _____)
- 8. Trash receptacles (if yes, do they appear to be regularly emptied?)
- 9. Buildings and/or homes that are well-maintained
- 10. Informative signage
- 11. Well-placed signage
- 12. Streetscape features (art, signage, etc.) that are representative of/suitable for the community
- 13. Pedestrian-scaled lighting
- 14. A posted speed limit that seems suitable (if yes, does it appear that drivers are obeying the limit? _____)

IMPRESSIONS:

- 1. The location/street is a safe and appealing destination
- 2. The location/street is a safe and appealing travel route
- 3. The location/street appears to be safe for users of all ages, abilities, races, income levels, etc.
- 4. The location/street appears to be safe for pedestrians during both the day and night
- 5. Pedestrians appear to be safe from moving vehicles
- 6. Pedestrians appear to be safe from crime, harassment or similar threats

For "No" or "Other" answers, use the space below or on the back of this worksheet to briefly explain the response.

NOTES OR OTHER OBSERVATIONS:

Walkability of the area, based on the findings above: Great Acceptable Mixed Poor

Summary

Record the score totals for each observation type

- Record the total number of yes responses for the category
- Record the total number of no responses for the category
- Record the one-word rating for the category

This information — as well as all notes, photographs, videos and observation discussions — will be helpful for writing a short report and/or preparing a PowerPoint presentation.

Community Name: Slatterly Park Neighborhood

Street/Intersection Observed: Hwy 14 and 12th St SE

Audit Date: 9/9/23

WORKSHEET	YES RESPONSES	NO RESPONSES	RATING <small>Great Acceptable Mixed Poor</small>
Sidewalks, Streets and Crossings (Single-Location Audit)	NA	NA	NA
Sidewalks, Streets and Crossings (Walking Audit)	10	5	Mixed-Poor
Sidewalks	7	2	Acceptable
Streets and Crossings			Mixed-Poor
Street Safety and Appeal	1	17	Poor
Public Transit Access			Mixed

NOTES OR OTHER OBSERVATIONS:

ROUTE 4 NOTES AND OTHER OBSERVATIONS

Very high-speed exposed corridor of narrow sidewalks overgrown with vegetation. Crossings are infrequent and lack protection. This is not a space meant for people to exist outside of cars despite the sidewalks.

Overgrown lawns, lack of crossings, curb cuts that put users into the street, driveways, narrow sidewalks, side streets with no sidewalks, high speed adjacency to plat area. Stressful environment to exist in.

Sidewalks, Streets and Crossings WALKING AUDIT

Community Name: Slatterly Park

Starting location: Lincoln k-8 Ending location: Mayo High School

Route: Lincoln-Mayo 11th Ave SE/Hwy 14

Audit date: 9/9/23 Start time: 10am AM | PM End time: 11am AM | PM

Posted speed limit(s): 35 Do the motorists appear to be obeying the speed limit(s)? no

Total number of vehicle lanes: 4 + turn lanes The street is: one-way | two-way

If more than one lane: Does the roadway have a median and/or a pedestrian island?

The street has: no sidewalk no sidewalk but needs one no sidewalk but needs two
 partial sidewalks a sidewalk on one side of the street sidewalks on both sides of the street

YES | NO | OTHER Skip any statements that don't apply

THE SIDEWALK:

- 1. Is separated from the street by a barrier or buffer (a curb, grass, landscaping)
- 2. Is surfaced with a material that is smooth and consistent (e.g., concrete or asphalt rather than bricks)
- 3. Is in good condition, without cracks or raised sections
- 4. Is free of obstacles (hydrants, utility poles, overgrown landscaping, trash receptacles)
- 5. Is free of interruptions from driveways (such as to/from homes, parking lots, etc.)
- 6. Is continuous (no segments are missing) and complete (it doesn't randomly end)
- 7. Is wide enough (at least 5 feet) for two people to walk side by side or pass one another
- 8. Has tactile ground surface indicators so pedestrians with vision impairment will know when the path is ending
- 9. Has a curb cut ramp (for use by wheelchairs, baby strollers, etc.) wherever it is interrupted by a street

THE STREET:

- 1. Has traffic lights and/or stop signs at intersections and crossings
- 2. The traffic lights and/or stop signs are clearly visible to drivers and pedestrians
- 3. Has crosswalks
- 4. The crosswalks are well marked and clearly visible to drivers and pedestrians
- 5. Has signage alerting drivers to the presence of pedestrians
- 6. Has a designated bicycle lane
- 7. Has a pedestrian crossing signal, also called a beacon (if yes, complete the next section)

THE PEDESTRIAN CROSSING SIGNALS:

- 1. Are working
- 2. Have a "push-to-walk" mechanism, meaning pedestrians can stop the vehicle traffic
- 3. Have audible prompts for people with vision impairment
- 4. Are placed in appropriate locations (if not, make note of where more are needed)
- 5. Provide enough time to cross (indicate the amount of time provided: _____ minutes _____ seconds)
- 6. Provide suitable opportunities to cross (indicate the amount of time pedestrians must wait for a traffic light change in order to cross: _____ minutes _____ seconds)

Consider using the "Build a Better Block" worksheet as well.

Walkability of the area, based on the findings above: Great Acceptable Mixed Poor

Street Safety and Appeal

Community Name: Slatterly Park Neighborhood

Location/Street Name(s): 11 Ave SE/Hwy 14

Audit date: 9/9/23 Start time: 10am AM | PM End time: 11am AM | PM

YES | NO | OTHER Skip any statements that don't apply

THE LOCATION HAS:

- 1. Places to sit
- 2. Shade trees
- 3. Grass, flowers and landscaping (if yes, is the greenery well maintained? _____)
- 4. Awnings, outdoor umbrellas or other shelter from rain and other weather conditions
- 5. Drinking fountains (if yes, are they working and clean? _____)
- 6. Public restrooms (if yes, are they clean and safe? _____)
- 7. A transit or bus shelter (if yes, is there seating? _____)
- 8. Trash receptacles (if yes, do they appear to be regularly emptied?)
- 9. Buildings and/or homes that are well-maintained
- 10. Informative signage
- 11. Well-placed signage
- 12. Streetscape features (art, signage, etc.) that are representative of/suitable for the community
- 13. Pedestrian-scaled lighting
- 14. A posted speed limit that seems suitable (if yes, does it appear that drivers are obeying the limit? _____)

IMPRESSIONS:

- 1. The location/street is a safe and appealing destination
- 2. The location/street is a safe and appealing travel route
- 3. The location/street appears to be safe for users of all ages, abilities, races, income levels, etc.
- 4. The location/street appears to be safe for pedestrians during both the day and night
- 5. Pedestrians appear to be safe from moving vehicles
- 6. Pedestrians appear to be safe from crime, harassment or similar threats

For "No" or "Other" answers, use the space below or on the back of this worksheet to briefly explain the response.

NOTES OR OTHER OBSERVATIONS:

Walkability of the area, based on the findings above: Great Acceptable Mixed Poor

Summary

Record the score totals for each observation type

- Record the total number of yes responses for the category
- Record the total number of no responses for the category
- Record the one-word rating for the category

This information — as well as all notes, photographs, videos and observation discussions — will be helpful for writing a short report and/or preparing a PowerPoint presentation.

Community Name: Slatterly Park Neighborhood

Street/Intersection Observed: Hwy 14 and 11 Ave SE

Audit Date: 9/9/23

WORKSHEET	YES RESPONSES	NO RESPONSES	RATING <small>Great Acceptable Mixed Poor</small>
Sidewalks, Streets and Crossings (Single-Location Audit)	NA	NA	NA
Sidewalks, Streets and Crossings (Walking Audit)	16	3	Acceptable
Sidewalks	8		Acceptable
Streets and Crossings	10		Acceptable
Street Safety and Appeal	2	13	Mixed
Public Transit Access	NA	NA	NA

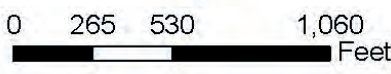
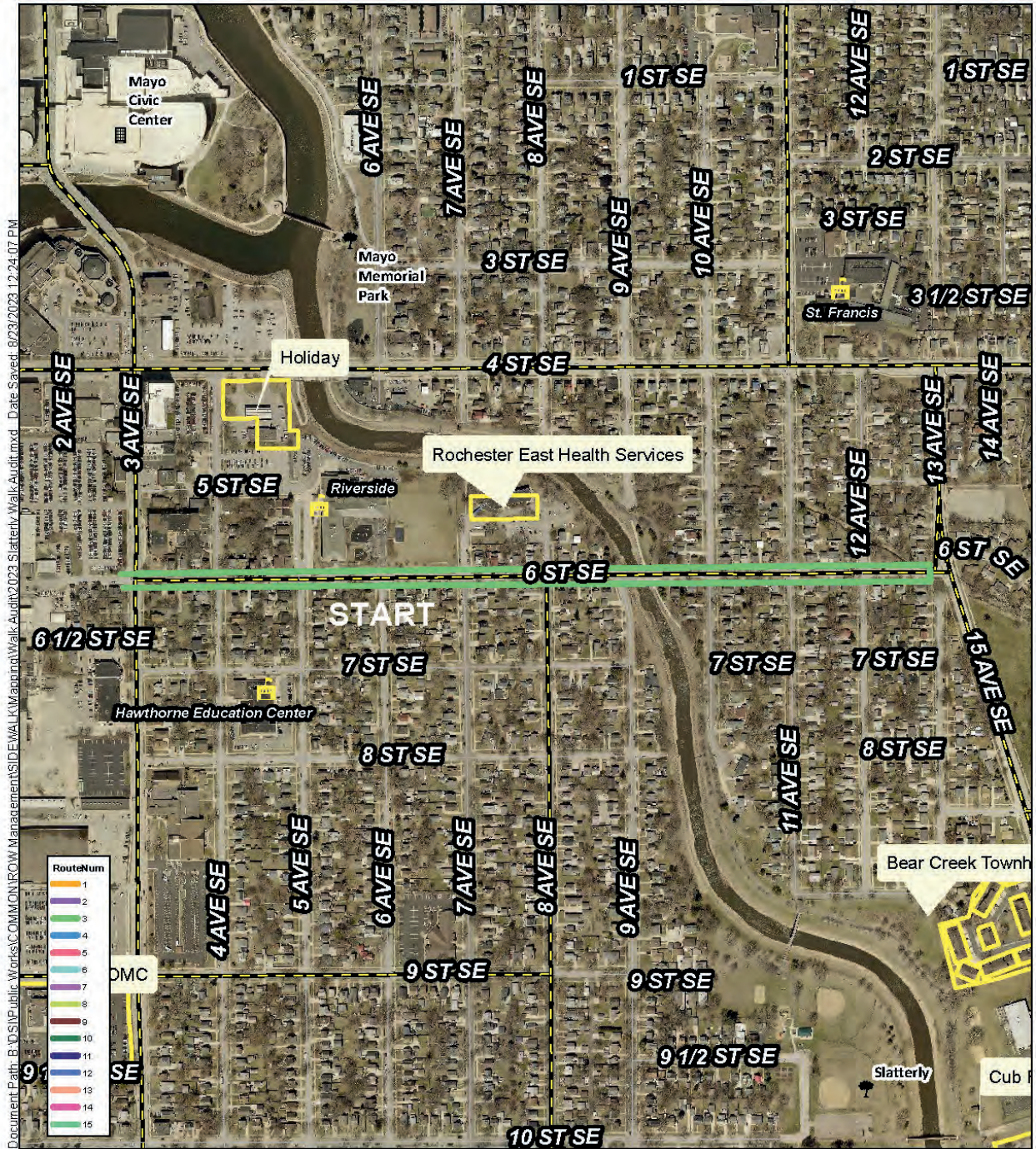
NOTES OR OTHER OBSERVATIONS:

ROUTE 4 NOTES AND OTHER OBSERVATIONS

One side has excellent canopy of coverage but lacks a direct entrance option for students. The other side is very exposed with overgrown vegetation and somewhat narrow sidewalks. The crossings are inconvenient and the roadway speeds are higher than posted limits. Unfortunate for a school zone.

One side of the street is great other than lack of direct school building access route for students. The other side is overgrown, had unmaintained fencing, and bus stop lacked every feature including access to buses from the sidewalk. Connectivity between the two sides are very limited. The speed limit seems very high for a school zone.

Route 5



Data contained has not been field verified and should be used as reference only. It is the user's responsibility for field verifying elevations, locations, dimensions, etc. to conduct detailed design.

The City of Rochester specifically disclaims all warranties, express or implied, including but not limited to implied warranties of fitness for a particular purpose, with respect to the information contained on this map. The City of Rochester shall have no liability with respect to any loss or damage directly or indirectly arising out of the use of this data.

Sidewalks, Streets and Crossings WALKING AUDIT

Community Name: Salterly Park Neighborhood

Starting location: 6th St SE Ending location: 6th St SE

Route: 6th St SE- 3 Ave to 11 Ave

Audit date: 9/9/23 Start time: 11am AM | PM End time: 11:45am AM | PM

Posted speed limit(s): 25 and 30 Do the motorists appear to be obeying the speed limit(s)? no

Total number of vehicle lanes: 2 The street is: one-way | two-way

If more than one lane: Does the roadway have a median and/or a pedestrian island?

The street has: no sidewalk no sidewalk but needs one no sidewalk but needs two
 partial sidewalks a sidewalk on one side of the street sidewalks on both sides of the street

YES | NO | OTHER Skip any statements that don't apply

THE SIDEWALK:

- 1. Is separated from the street by a barrier or buffer (a curb, grass, landscaping)
- 2. Is surfaced with a material that is smooth and consistent (e.g., concrete or asphalt rather than bricks)
- 3. Is in good condition, without cracks or raised sections
- 4. Is free of obstacles (hydrants, utility poles, overgrown landscaping, trash receptacles)
- 5. Is free of interruptions from driveways (such as to/from homes, parking lots, etc.)
- 6. Is continuous (no segments are missing) and complete (it doesn't randomly end)
- 7. Is wide enough (at least 5 feet) for two people to walk side by side or pass one another
- 8. Has tactile ground surface indicators so pedestrians with vision impairment will know when the path is ending
- 9. Has a curb cut ramp (for use by wheelchairs, baby strollers, etc.) wherever it is interrupted by a street

THE STREET:

- 1. Has traffic lights and/or stop signs at intersections and crossings
- 2. The traffic lights and/or stop signs are clearly visible to drivers and pedestrians
- 3. Has crosswalks
- 4. The crosswalks are well marked and clearly visible to drivers and pedestrians
- 5. Has signage alerting drivers to the presence of pedestrians
- 6. Has a designated bicycle lane
- 7. Has a pedestrian crossing signal, also called a beacon (if yes, complete the next section)

THE PEDESTRIAN CROSSING SIGNALS:

- 1. Are working
- 2. Have a "push-to-walk" mechanism, meaning pedestrians can stop the vehicle traffic
- 3. Have audible prompts for people with vision impairment
- 4. Are placed in appropriate locations (if not, make note of where more are needed)
- 5. Provide enough time to cross (indicate the amount of time provided: _____ minutes _____ seconds)
- 6. Provide suitable opportunities to cross (indicate the amount of time pedestrians must wait for a traffic light change in order to cross: _____ minutes _____ seconds)

Consider using the "Build a Better Block" worksheet as well.

Walkability of the area, based on the findings above: Great Acceptable Mixed Poor

Street Safety and Appeal

Community Name: Slatterly Park Neighborhood

Location/Street Name(s): 6th ST SE

Audit date: 9/9/23 Start time: 11am AM | PM End time: 11:45am AM | PM

YES | NO | OTHER Skip any statements that don't apply

THE LOCATION HAS:

- 1. Places to sit
- 2. Shade trees
- 3. Grass, flowers and landscaping (if yes, is the greenery well maintained? _____)
- 4. Awnings, outdoor umbrellas or other shelter from rain and other weather conditions
- 5. Drinking fountains (if yes, are they working and clean? _____)
- 6. Public restrooms (if yes, are they clean and safe? _____)
- 7. A transit or bus shelter (if yes, is there seating? _____)
- 8. Trash receptacles (if yes, do they appear to be regularly emptied?)
- 9. Buildings and/or homes that are well-maintained
- 10. Informative signage
- 11. Well-placed signage
- 12. Streetscape features (art, signage, etc.) that are representative of/suitable for the community
- 13. Pedestrian-scaled lighting
- 14. A posted speed limit that seems suitable (if yes, does it appear that drivers are obeying the limit? _____)

IMPRESSIONS:

- 1. The location/street is a safe and appealing destination
- 2. The location/street is a safe and appealing travel route
- 3. The location/street appears to be safe for users of all ages, abilities, races, income levels, etc.
- 4. The location/street appears to be safe for pedestrians during both the day and night
- 5. Pedestrians appear to be safe from moving vehicles
- 6. Pedestrians appear to be safe from crime, harassment or similar threats

For "No" or "Other" answers, use the space below or on the back of this worksheet to briefly explain the response.

NOTES OR OTHER OBSERVATIONS:

Walkability of the area, based on the findings above: Great Acceptable Mixed Poor

Summary

Record the score totals for each observation type

- Record the total number of yes responses for the category
- Record the total number of no responses for the category
- Record the one-word rating for the category

This information — as well as all notes, photographs, videos and observation discussions — will be helpful for writing a short report and/or preparing a PowerPoint presentation.

Community Name: Slatterly Park Neighborhood

Street/Intersection Observed: 6th St SE and _____

Audit Date: 9/9/23

WORKSHEET	YES RESPONSES	NO RESPONSES	RATING <small>Great Acceptable Mixed Poor</small>
Sidewalks, Streets and Crossings (Single-Location Audit)	NA	NA	NA
Sidewalks, Streets and Crossings (Walking Audit)	15	11	Mixed
Sidewalks	5	4	Mixed
Streets and Crossings	2	8	Poor
Street Safety and Appeal	8	11	Mixed
Public Transit Access			Poor

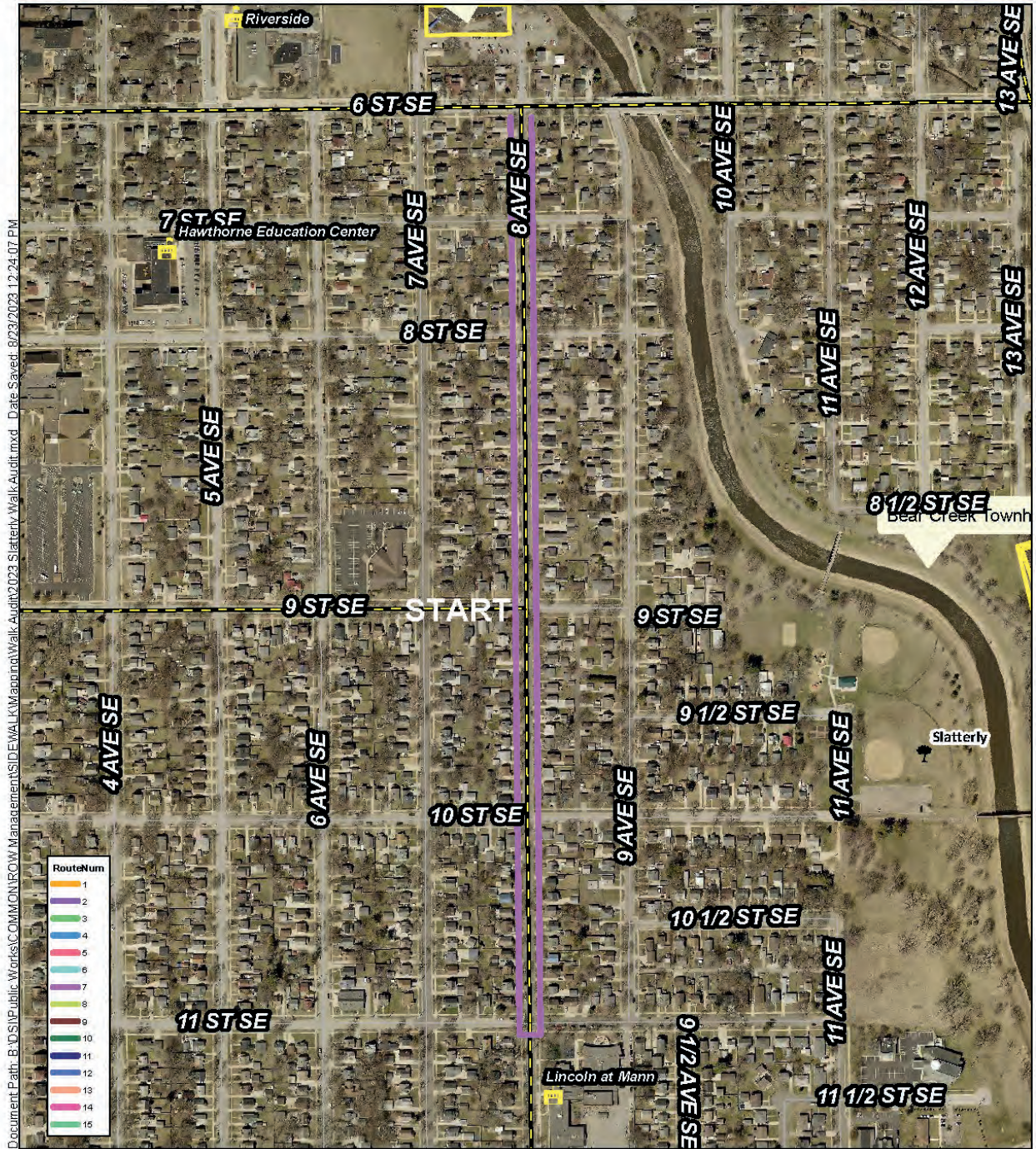
NOTES OR OTHER OBSERVATIONS:

ROUTE 5 NOTES AND OTHER OBSERVATIONS

Riverside School was along this route. The crosswalks were not marked well or painted. No stop signs for 8 blocks either way. Flow of traffic was fast along the route. There was no bike lane so kids would need to ride the sidewalk or the street. Need raised speed tables near school bus stops. Curb cuts were in the center of the sidewalk and there pushing pedestrians out onto the street and several utility poles in the center of the curb cuts blocking entry. Some tripping hazards such as trees overgrowth and roots and grass clumps in the sidewalk along the route. Intersection of 3rd Ave SE and 6th St SE was a VERY bad intersection. No stop light no crosswalk no median.40mph and no signs in either direction for two blocks. Intersection at 6th St SE and 13th/15th is a VERY bad intersection. It is marked as a truck route. There is a city park on the other side of the road but no way to get to it safely. VERY HAZARDOUS for pedestrians. Speed was FAST. If kids in the area (because of school) they can not cross safely. There was not a clear crosswalk, no mechanism to stop traffic to cross no clear route or curb cut, etc.

The top priorities we noted would be street crossings and signals around the school and near the intersection of the park. We felt it was not safe for kids to walk or ride bikes to schools on this route. It should be evaluated for stop signs and crosswalks. For someone using a can, walker, or wheelchair it would be very difficult to maneuver the crosswalks and some curb cuts and intersections. For "regular walker" it was sufficient.

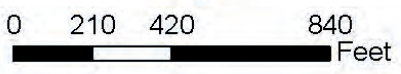
Route 6



Document Path: B:\GIS\Public Works\COMMON\ROW_Management\SIDEWALK\Maping\Walk Audit\2023 Slatterly Walk Audit.mxd Date Saved: 8/23/2023 12:24:07 PM



8 Ave SE - 6 ST to 11 ST



Data contained has not been field verified and should be used as reference only. It is the user's responsibility for field verifying elevations, locations, dimensions, etc. to conduct detailed design.

The City of Rochester specifically disclaims all warranties, express or implied, including but not limited to implied warranties of fitness for a particular purpose, with respect to the information contained on this map. The City of Rochester shall have no liability with respect to any loss or damage directly or indirectly arising out of the use of this data.

Sidewalks, Streets and Crossings WALKING AUDIT

Community Name: Slatterly Park Neighborhood

Starting location: 8th Ave SE - 9th St SE **Ending location:** 8th Ave SE - 9th St SE

Route: 8th Ave SE from 6th St SE to 11th St SE

Audit date: 9/9/23 **Start time:** 11 am **AM | PM** **End time:** 12 pm **AM | PM**

Posted speed limit(s): 25 **Do the motorists appear to be obeying the speed limit(s)?** no

Total number of vehicle lanes: 2 **The street is:** one-way | two-way

If more than one lane: Does the roadway have a median and/or a pedestrian island?

The street has: no sidewalk no sidewalk but needs one no sidewalk but needs two
 partial sidewalks a sidewalk on one side of the street sidewalks on both sides of the street

YES | NO | OTHER Skip any statements that don't apply

THE SIDEWALK:

- 1. Is separated from the street by a barrier or buffer (a curb, grass, landscaping)
- 2. Is surfaced with a material that is smooth and consistent (e.g., concrete or asphalt rather than bricks)
- 3. Is in good condition, without cracks or raised sections
- 4. Is free of obstacles (hydrants, utility poles, overgrown landscaping, trash receptacles)
- 5. Is free of interruptions from driveways (such as to/from homes, parking lots, etc.)
- 6. Is continuous (no segments are missing) and complete (it doesn't randomly end)
- 7. Is wide enough (at least 5 feet) for two people to walk side by side or pass one another
- 8. Has tactile ground surface indicators so pedestrians with vision impairment will know when the path is ending
- 9. Has a curb cut ramp (for use by wheelchairs, baby strollers, etc.) wherever it is interrupted by a street

THE STREET:

- 1. Has traffic lights and/or stop signs at intersections and crossings
- 2. The traffic lights and/or stop signs are clearly visible to drivers and pedestrians
- 3. Has crosswalks
- 4. The crosswalks are well marked and clearly visible to drivers and pedestrians
- 5. Has signage alerting drivers to the presence of pedestrians
- 6. Has a designated bicycle lane
- 7. Has a pedestrian crossing signal, also called a beacon (if yes, complete the next section)

THE PEDESTRIAN CROSSING SIGNALS:

- 1. Are working
- 2. Have a "push-to-walk" mechanism, meaning pedestrians can stop the vehicle traffic
- 3. Have audible prompts for people with vision impairment
- 4. Are placed in appropriate locations (if not, make note of where more are needed)
- 5. Provide enough time to cross (indicate the amount of time provided: _____ minutes _____ seconds)
- 6. Provide suitable opportunities to cross (indicate the amount of time pedestrians must wait for a traffic light change in order to cross: _____ minutes _____ seconds)

Consider using the "Build a Better Block" worksheet as well.

Walkability of the area, based on the findings above: Great Acceptable Mixed Poor

Street Safety and Appeal

Community Name: Slatterly Park Neighborhood

Location/Street Name(s): 8th Ave SE from 6th St SE to 11th St SE

Audit date: 6/9/23 Start time: 11am AM | PM End time: 12pm AM | PM

YES | NO | OTHER Skip any statements that don't apply

THE LOCATION HAS:

- 1. Places to sit
- 2. Shade trees
- 3. Grass, flowers and landscaping (if yes, is the greenery well maintained? yes)
- 4. Awnings, outdoor umbrellas or other shelter from rain and other weather conditions
- 5. Drinking fountains (if yes, are they working and clean? _____)
- 6. Public restrooms (if yes, are they clean and safe? _____)
- 7. A transit or bus shelter (if yes, is there seating? _____)
- 8. Trash receptacles (if yes, do they appear to be regularly emptied?)
- 9. Buildings and/or homes that are well-maintained
- 10. Informative signage
- 11. Well-placed signage
- 12. Streetscape features (art, signage, etc.) that are representative of/suitable for the community
- 13. Pedestrian-scaled lighting
- 14. A posted speed limit that seems suitable (if yes, does it appear that drivers are obeying the limit? no)

IMPRESSIONS:

- 1. The location/street is a safe and appealing destination
- 2. The location/street is a safe and appealing travel route
- 3. The location/street appears to be safe for users of all ages, abilities, races, income levels, etc.
- 4. The location/street appears to be safe for pedestrians during both the day and night
- 5. Pedestrians appear to be safe from moving vehicles
- 6. Pedestrians appear to be safe from crime, harassment or similar threats

For "No" or "Other" answers, use the space below or on the back of this worksheet to briefly explain the response.

NOTES OR OTHER OBSERVATIONS:

Walkability of the area, based on the findings above: Great Acceptable Mixed Poor

Summary

Record the score totals for each observation type

- Record the total number of yes responses for the category
- Record the total number of no responses for the category
- Record the one-word rating for the category

This information — as well as all notes, photographs, videos and observation discussions — will be helpful for writing a short report and/or preparing a PowerPoint presentation.

Community Name: Slatterly Park Neighborhood

Street/Intersection Observed: 8th Ave SE from 6th St Se to 11th St SE and _____

Audit Date: 9/9/23

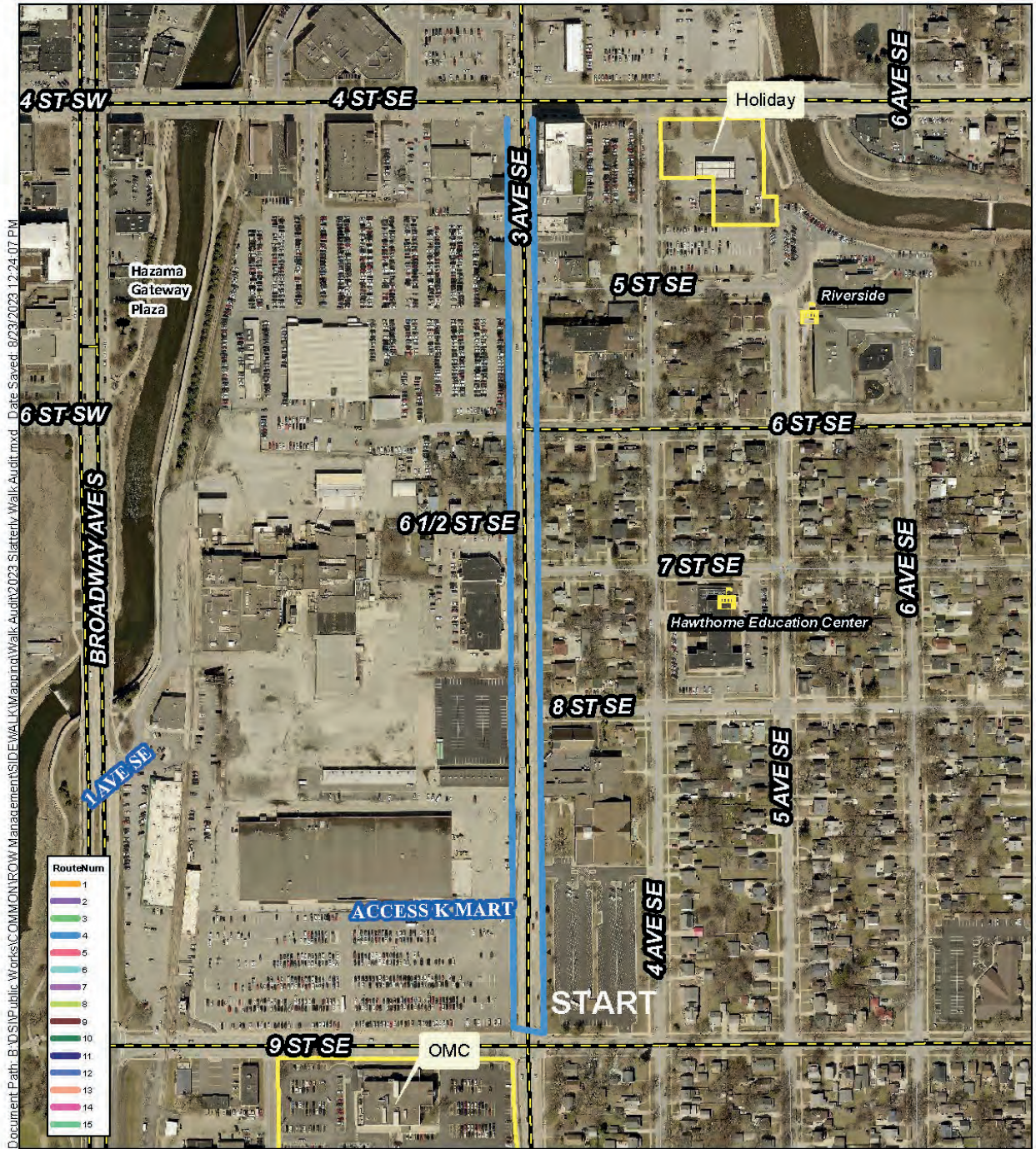
WORKSHEET	YES RESPONSES	NO RESPONSES	RATING <small>Great Acceptable Mixed Poor</small>
Sidewalks, Streets and Crossings (Single-Location Audit)	-	-	-
Sidewalks, Streets and Crossings (Walking Audit)	7	7	Acceptable
Sidewalks	-	-	-
Streets and Crossings	-	-	-
Street Safety and Appeal	9	2	Acceptable
Public Transit Access	-	-	-

NOTES OR OTHER OBSERVATIONS:

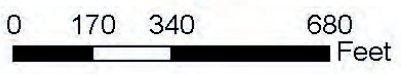
ROUTE 6 NOTES AND OTHER OBSERVATIONS

Lincoln School is at 8th Ave SE and 11th St SE. 4 way stop No marked crosswalks. No marked crosswalks along route. Several intersections had curbs only of 3 of 4 corners. No stop signs along 8th Ave SE. Traffic fast. Bike lane indicated but no lane marked. Some sidewalk improvements and leveling along route. Occasions of vegetation growth narrowing sidewalk. Some tree/shrub growth block sidewalk. Occasional trip hazards from uneven surfaces.

Route 7



3 Ave SE - 4 St to 9 St



Data contained has not been field verified and should be used as reference only. It is the user's responsibility for field verifying elevations, locations, dimensions, etc. to conduct detailed design.

The City of Rochester specifically disclaims all warranties, express or implied, including but not limited to implied warranties of fitness for a particular purpose, with respect to the information contained on this map. The City of Rochester shall have no liability with respect to any loss or damage directly or indirectly arising out of the use of this data.

Sidewalks, Streets and Crossings WALKING AUDIT

Community Name: Slatterly Park Community

Starting location: 3rd Ave SE/9th St SE **Ending location:** 3rd Ave SE/9th St SE

Route: 3 Ave SE - 4th St SE to 9th St SE

Audit date: 9/9/23 **Start time:** 10:30am **AM | PM** **End time:** 11:30am **AM | PM**

Posted speed limit(s): 30mph **Do the motorists appear to be obeying the speed limit(s)?** no

Total number of vehicle lanes: 4-5 **The street is:** one-way | two-way

If more than one lane: Does the roadway have a median and/or a pedestrian island?

The street has: no sidewalk no sidewalk but needs one no sidewalk but needs two
 partial sidewalks a sidewalk on one side of the street sidewalks on both sides of the street

YES | NO | OTHER Skip any statements that don't apply

THE SIDEWALK:

- 1. Is separated from the street by a barrier or buffer (a curb, grass, landscaping)
- 2. Is surfaced with a material that is smooth and consistent (e.g., concrete or asphalt rather than bricks)
- 3. Is in good condition, without cracks or raised sections
- 4. Is free of obstacles (hydrants, utility poles, overgrown landscaping, trash receptacles)
- 5. Is free of interruptions from driveways (such as to/from homes, parking lots, etc.)
- 6. Is continuous (no segments are missing) and complete (it doesn't randomly end)
- 7. Is wide enough (at least 5 feet) for two people to walk side by side or pass one another
- 8. Has tactile ground surface indicators so pedestrians with vision impairment will know when the path is ending
- 9. Has a curb cut ramp (for use by wheelchairs, baby strollers, etc.) wherever it is interrupted by a street

THE STREET:

- 1. Has traffic lights and/or stop signs at intersections and crossings
- 2. The traffic lights and/or stop signs are clearly visible to drivers and pedestrians
- 3. Has crosswalks
- 4. The crosswalks are well marked and clearly visible to drivers and pedestrians
- 5. Has signage alerting drivers to the presence of pedestrians
- 6. Has a designated bicycle lane
- 7. Has a pedestrian crossing signal, also called a beacon (if yes, complete the next section)

THE PEDESTRIAN CROSSING SIGNALS:

- 1. Are working
- 2. Have a "push-to-walk" mechanism, meaning pedestrians can stop the vehicle traffic
- 3. Have audible prompts for people with vision impairment
- 4. Are placed in appropriate locations (if not, make note of where more are needed)
- 5. Provide enough time to cross (indicate the amount of time provided: _____ minutes _____ seconds)
- 6. Provide suitable opportunities to cross (indicate the amount of time pedestrians must wait for a traffic light change in order to cross: _____ minutes _____ seconds)

Consider using the "Build a Better Block" worksheet as well.

Walkability of the area, based on the findings above: Great Acceptable Mixed Poor

Street Safety and Appeal

Community Name: Slattery Park

Location/Street Name(s): 3 Ave SE - 4th St SE to 9th St SE

Audit date: 9/9/23 Start time: 10:30am AM | PM End time: 11:30am AM | PM

YES | NO | OTHER Skip any statements that don't apply

THE LOCATION HAS:

- 1. Places to sit
- 2. Shade trees
- 3. Grass, flowers and landscaping (if yes, is the greenery well maintained? _____)
- 4. Awnings, outdoor umbrellas or other shelter from rain and other weather conditions
- 5. Drinking fountains (if yes, are they working and clean? _____)
- 6. Public restrooms (if yes, are they clean and safe? _____)
- 7. A transit or bus shelter (if yes, is there seating? _____)
- 8. Trash receptacles (if yes, do they appear to be regularly emptied?)
- 9. Buildings and/or homes that are well-maintained
- 10. Informative signage
- 11. Well-placed signage
- 12. Streetscape features (art, signage, etc.) that are representative of/suitable for the community
- 13. Pedestrian-scaled lighting
- 14. A posted speed limit that seems suitable (if yes, does it appear that drivers are obeying the limit? _____)

IMPRESSIONS:

- 1. The location/street is a safe and appealing destination
- 2. The location/street is a safe and appealing travel route
- 3. The location/street appears to be safe for users of all ages, abilities, races, income levels, etc.
- 4. The location/street appears to be safe for pedestrians during both the day and night
- 5. Pedestrians appear to be safe from moving vehicles
- 6. Pedestrians appear to be safe from crime, harassment or similar threats

For "No" or "Other" answers, use the space below or on the back of this worksheet to briefly explain the response.

NOTES OR OTHER OBSERVATIONS:

Walkability of the area, based on the findings above: Great Acceptable Mixed Poor

Summary

Record the score totals for each observation type

- Record the total number of yes responses for the category
- Record the total number of no responses for the category
- Record the one-word rating for the category

This information — as well as all notes, photographs, videos and observation discussions — will be helpful for writing a short report and/or preparing a PowerPoint presentation.

Community Name: Slatterly Park

Street/Intersection Observed: 3rd Ave SE from 9th St SE to 81/2 St SE and _____

Audit Date: 9/9/23

WORKSHEET	YES RESPONSES	NO RESPONSES	RATING
			Great Acceptable Mixed Poor
Sidewalks, Streets and Crossings (Single-Location Audit)			Mixed
Sidewalks, Streets and Crossings (Walking Audit)	12	6	Mixed
Sidewalks			Mixed
Streets and Crossings			Mixed
Street Safety and Appeal	3	16	Poor
Public Transit Access			Mixed

NOTES OR OTHER OBSERVATIONS:

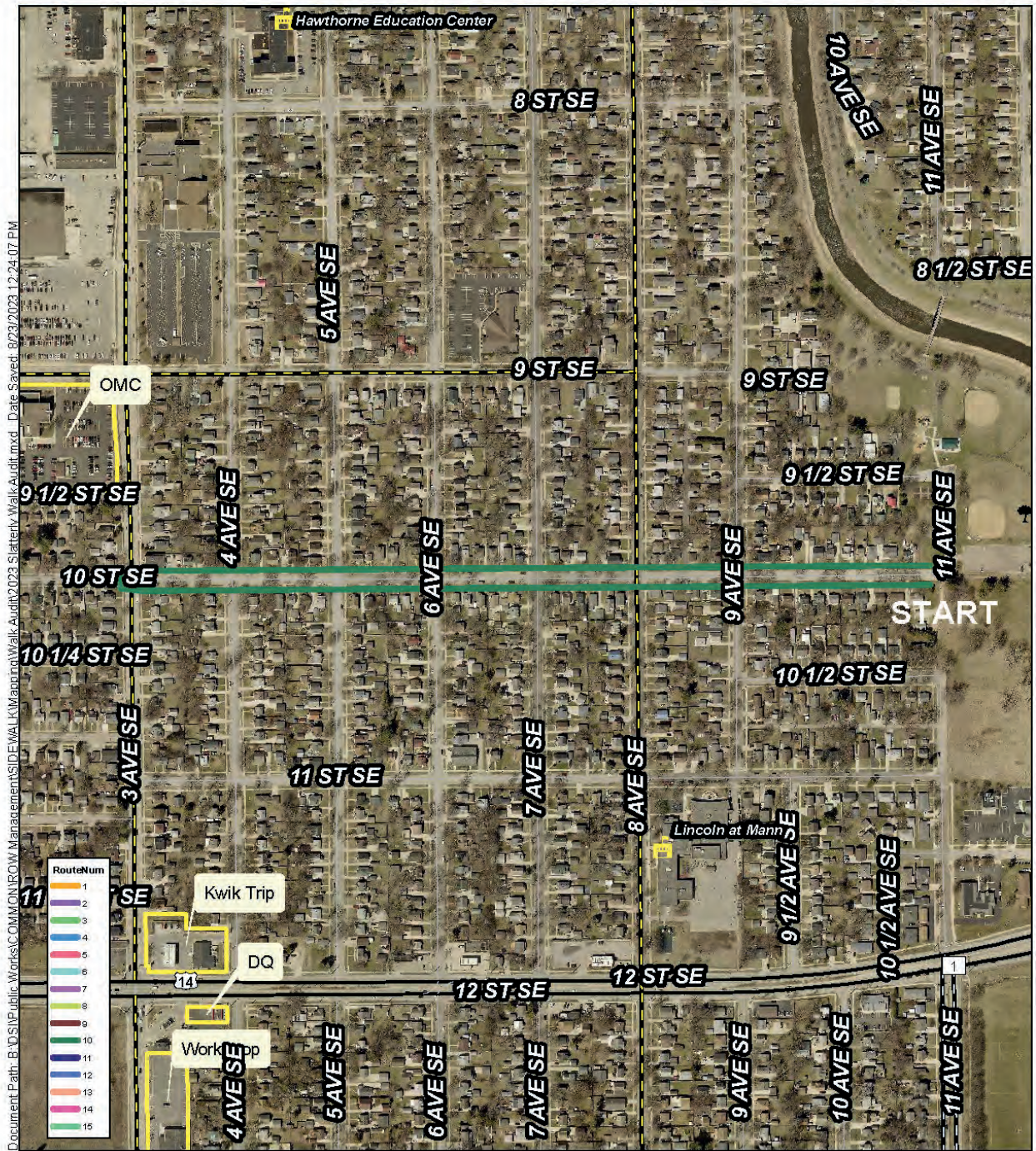
ROUTE 7 NOTES AND OTHER OBSERVATIONS

Landscaping is concrete not grass. Crosswalk paint very faded. Very unsafe for bikes. One crossing had auditor prompt. One did not. Crossing times too short. Noise from vehicles a big problem. Area to be avoided if possible. 30 mph signs traffic going 50. One good tree.

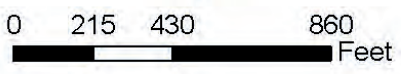
Paved boulevard with no grass or landscaping. Very unsafe and fast road. Stress inducing loud noise traffic.

Winter conditions would be very different.

Route 8



10 ST SE - 11 Ave to 3 Ave



Data contained has not been field verified and should be used as reference only. It is the user's responsibility for field verifying elevations, locations, dimensions, etc. to conduct detailed design.

The City of Rochester specifically disclaims all warranties, express or implied, including but not limited to implied warranties of fitness for a particular purpose, with respect to the information contained on this map. The City of Rochester shall have no liability with respect to any loss or damage directly or indirectly arising out of the use of this data.

Sidewalks, Streets and Crossings WALKING AUDIT

Community Name: Slatterly Park Neighborhood

Starting location: 10th St SE and 11th Ave SE **Ending location:** 10th St SE and 11th Ave SE

Route: 10 St SE - 11 Ave SE to 3 Ave SE

Audit date: 9/9/23 **Start time:** 10:30am **AM | PM** **End time:** 11:30am **AM | PM**

Posted speed limit(s): 40mph **Do the motorists appear to be obeying the speed limit(s)?** yes

Total number of vehicle lanes: 4 **The street is:** one-way | two-way

If more than one lane: Does the roadway have a median and/or a pedestrian island?

The street has: no sidewalk no sidewalk but needs one no sidewalk but needs two
 partial sidewalks a sidewalk on one side of the street sidewalks on both sides of the street

YES | NO | OTHER Skip any statements that don't apply

THE SIDEWALK:

- 1. Is separated from the street by a barrier or buffer (a curb, grass, landscaping)
- 2. Is surfaced with a material that is smooth and consistent (e.g., concrete or asphalt rather than bricks)
- 3. Is in good condition, without cracks or raised sections
- 4. Is free of obstacles (hydrants, utility poles, overgrown landscaping, trash receptacles)
- 5. Is free of interruptions from driveways (such as to/from homes, parking lots, etc.)
- 6. Is continuous (no segments are missing) and complete (it doesn't randomly end)
- 7. Is wide enough (at least 5 feet) for two people to walk side by side or pass one another
- 8. Has tactile ground surface indicators so pedestrians with vision impairment will know when the path is ending
- 9. Has a curb cut ramp (for use by wheelchairs, baby strollers, etc.) wherever it is interrupted by a street

THE STREET:

- 1. Has traffic lights and/or stop signs at intersections and crossings
- 2. The traffic lights and/or stop signs are clearly visible to drivers and pedestrians
- 3. Has crosswalks
- 4. The crosswalks are well marked and clearly visible to drivers and pedestrians
- 5. Has signage alerting drivers to the presence of pedestrians
- 6. Has a designated bicycle lane
- 7. Has a pedestrian crossing signal, also called a beacon (if yes, complete the next section)

THE PEDESTRIAN CROSSING SIGNALS:

- 1. Are working
- 2. Have a "push-to-walk" mechanism, meaning pedestrians can stop the vehicle traffic
- 3. Have audible prompts for people with vision impairment
- 4. Are placed in appropriate locations (if not, make note of where more are needed)
- 5. Provide enough time to cross (indicate the amount of time provided: _____ minutes _____ seconds)
- 6. Provide suitable opportunities to cross (indicate the amount of time pedestrians must wait for a traffic light change in order to cross: _____ minutes _____ seconds)

Consider using the "Build a Better Block" worksheet as well.

Walkability of the area, based on the findings above: Great Acceptable Mixed Poor

Street Safety and Appeal

Community Name: Slatterly Park NeighborhoodLocation/Street Name(s): 10st SE - 11 Ave SE to 3 Ave SEAudit date: 9/9/23 Start time: 10:30am AM | PM End time: 11:30am AM | PM

YES | NO | OTHER Skip any statements that don't apply

THE LOCATION HAS:

- 1. Places to sit
- 2. Shade trees
- 3. Grass, flowers and landscaping (if yes, is the greenery well maintained? yes)
- 4. Awnings, outdoor umbrellas or other shelter from rain and other weather conditions
- 5. Drinking fountains (if yes, are they working and clean? _____)
- 6. Public restrooms (if yes, are they clean and safe? _____)
- 7. A transit or bus shelter (if yes, is there seating? _____)
- 8. Trash receptacles (if yes, do they appear to be regularly emptied?)
- 9. Buildings and/or homes that are well-maintained
- 10. Informative signage
- 11. Well-placed signage
- 12. Streetscape features (art, signage, etc.) that are representative of/suitable for the community
- 13. Pedestrian-scaled lighting
- 14. A posted speed limit that seems suitable (if yes, does it appear that drivers are obeying the limit? _____)

IMPRESSIONS:

- 1. The location/street is a safe and appealing destination
- 2. The location/street is a safe and appealing travel route
- 3. The location/street appears to be safe for users of all ages, abilities, races, income levels, etc.
- 4. The location/street appears to be safe for pedestrians during both the day and night
- 5. Pedestrians appear to be safe from moving vehicles
- 6. Pedestrians appear to be safe from crime, harassment or similar threats

For "No" or "Other" answers, use the space below or on the back of this worksheet to briefly explain the response.

NOTES OR OTHER OBSERVATIONS:

Walkability of the area, based on the findings above: Great Acceptable Mixed Poor

Summary

Record the score totals for each observation type

- Record the total number of yes responses for the category
- Record the total number of no responses for the category
- Record the one-word rating for the category

This information — as well as all notes, photographs, videos and observation discussions — will be helpful for writing a short report and/or preparing a PowerPoint presentation.

Community Name: Slatterly Park Neighborhood

Street/Intersection Observed: 10th ST SE and 13th Ave SE

Audit Date: 9/9/23

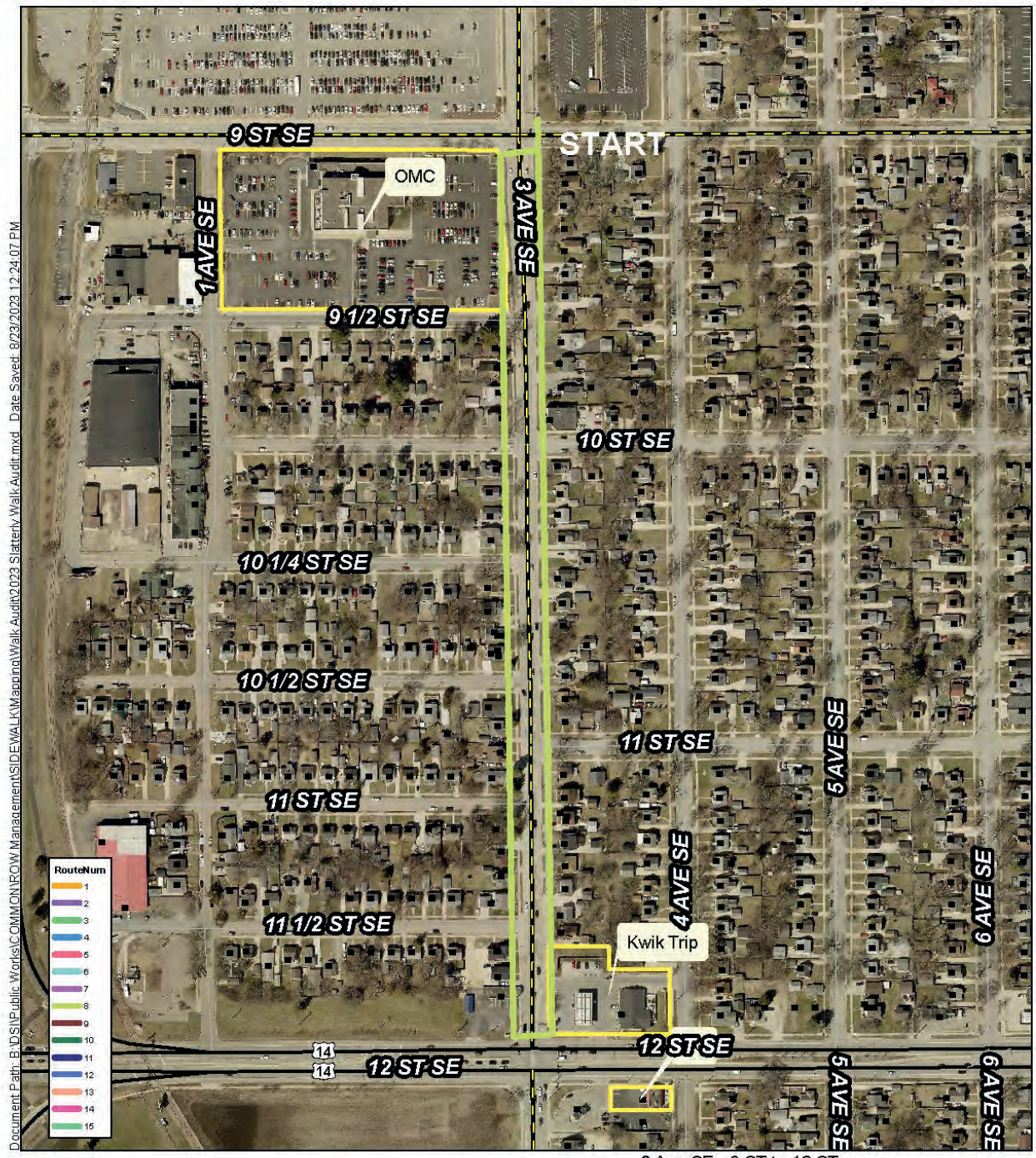
WORKSHEET	YES RESPONSES	NO RESPONSES	RATING <small>Great Acceptable Mixed Poor</small>
Sidewalks, Streets and Crossings (Single-Location Audit)	-	-	-
Sidewalks, Streets and Crossings (Walking Audit)	10	12	Mixed
Sidewalks	5	4	Acceptable
Streets and Crossings	5	8	Mixed
Street Safety and Appeal	3	16	Poor
Public Transit Access	-	-	-

NOTES OR OTHER OBSERVATIONS:

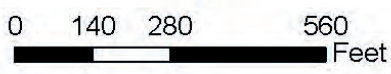
ROUTE 8 NOTES AND OTHER OBSERVATIONS

No sidewalk on south side from 8th St SE to 9th St SE. Work recently done on sidewalks. Curb cuts in most areas. Crosswalks not marked. No pedestrian signals. Nice big trees. Neighborhood watch signs. Residents said night lighting not good.

Route 09



3 Ave SE - 9 ST to 12 ST



Data contained has not been field verified and should be used as reference only. It is the user's responsibility for field verifying elevations, locations, dimensions, etc. to conduct detailed design.

The City of Rochester specifically disclaims all warranties, express or implied, including but not limited to implied warranties of fitness for a particular purpose, with respect to the information contained on this map. The City of Rochester shall have no liability with respect to any loss or damage directly or indirectly arising out of the use of this data.

Sidewalks, Streets and Crossings WALKING AUDIT

Community Name: Slatterly Park Neighborhood

Starting location: 3rd Ave SE/9th St SE **Ending location:** 3rd Ave SE/9th St SE

Route: 3rd Ave SE - 9th St SE to 12th St SE

Audit date: 9/9/23 **Start time:** 10:30am **AM | PM** **End time:** 11:30am **AM | PM**

Posted speed limit(s): 30mph **Do the motorists appear to be obeying the speed limit(s)?** no

Total number of vehicle lanes: 4-5 **The street is:** one-way | two-way

If more than one lane: Does the roadway have a median and/or a pedestrian island?

The street has: no sidewalk no sidewalk but needs one no sidewalk but needs two
 partial sidewalks a sidewalk on one side of the street sidewalks on both sides of the street

YES | NO | OTHER Skip any statements that don't apply

THE SIDEWALK:

- 1. Is separated from the street by a barrier or buffer (a curb, grass, landscaping)
- 2. Is surfaced with a material that is smooth and consistent (e.g., concrete or asphalt rather than bricks)
- 3. Is in good condition, without cracks or raised sections
- 4. Is free of obstacles (hydrants, utility poles, overgrown landscaping, trash receptacles)
- 5. Is free of interruptions from driveways (such as to/from homes, parking lots, etc.)
- 6. Is continuous (no segments are missing) and complete (it doesn't randomly end)
- 7. Is wide enough (at least 5 feet) for two people to walk side by side or pass one another
- 8. Has tactile ground surface indicators so pedestrians with vision impairment will know when the path is ending
- 9. Has a curb cut ramp (for use by wheelchairs, baby strollers, etc.) wherever it is interrupted by a street

THE STREET:

- 1. Has traffic lights and/or stop signs at intersections and crossings
- 2. The traffic lights and/or stop signs are clearly visible to drivers and pedestrians
- 3. Has crosswalks
- 4. The crosswalks are well marked and clearly visible to drivers and pedestrians
- 5. Has signage alerting drivers to the presence of pedestrians
- 6. Has a designated bicycle lane
- 7. Has a pedestrian crossing signal, also called a beacon (if yes, complete the next section)

THE PEDESTRIAN CROSSING SIGNALS:

- 1. Are working
- 2. Have a "push-to-walk" mechanism, meaning pedestrians can stop the vehicle traffic
- 3. Have audible prompts for people with vision impairment
- 4. Are placed in appropriate locations (if not, make note of where more are needed)
- 5. Provide enough time to cross (indicate the amount of time provided: _____ minutes _____ seconds)
- 6. Provide suitable opportunities to cross (indicate the amount of time pedestrians must wait for a traffic light change in order to cross: _____ minutes _____ seconds)

Consider using the "Build a Better Block" worksheet as well.

Walkability of the area, based on the findings above: Great Acceptable Mixed Poor

Street Safety and Appeal

Community Name: Slatterly Park Neighborhood

Location/Street Name(s): 3rd Ave SE - 9th St SE to 12th St SE

Audit date: 9/9/23 Start time: 10:30am AM | PM End time: 11:30am AM | PM

YES | NO | OTHER Skip any statements that don't apply

THE LOCATION HAS:

- 1. Places to sit
- 2. Shade trees
- 3. Grass, flowers and landscaping (if yes, is the greenery well maintained? _____)
- 4. Awnings, outdoor umbrellas or other shelter from rain and other weather conditions
- 5. Drinking fountains (if yes, are they working and clean? _____)
- 6. Public restrooms (if yes, are they clean and safe? _____)
- 7. A transit or bus shelter (if yes, is there seating? _____)
- 8. Trash receptacles (if yes, do they appear to be regularly emptied?)
- 9. Buildings and/or homes that are well-maintained
- 10. Informative signage
- 11. Well-placed signage
- 12. Streetscape features (art, signage, etc.) that are representative of/suitable for the community
- 13. Pedestrian-scaled lighting
- 14. A posted speed limit that seems suitable (if yes, does it appear that drivers are obeying the limit? _____)

IMPRESSIONS:

- 1. The location/street is a safe and appealing destination
- 2. The location/street is a safe and appealing travel route
- 3. The location/street appears to be safe for users of all ages, abilities, races, income levels, etc.
- 4. The location/street appears to be safe for pedestrians during both the day and night
- 5. Pedestrians appear to be safe from moving vehicles
- 6. Pedestrians appear to be safe from crime, harassment or similar threats

For "No" or "Other" answers, use the space below or on the back of this worksheet to briefly explain the response.

NOTES OR OTHER OBSERVATIONS:

Walkability of the area, based on the findings above: Great Acceptable Mixed Poor

Summary

Record the score totals for each observation type

- Record the total number of yes responses for the category
- Record the total number of no responses for the category
- Record the one-word rating for the category

This information — as well as all notes, photographs, videos and observation discussions — will be helpful for writing a short report and/or preparing a PowerPoint presentation.

Community Name: Slattery Park Neighborhood

Street/Intersection Observed: 3rd Ave SE - 9th St SE to 12th St SE and _____

Audit Date: 9/9/23

WORKSHEET	YES RESPONSES	NO RESPONSES	RATING <small>Great Acceptable Mixed Poor</small>
Sidewalks, Streets and Crossings (Single-Location Audit)	-	-	-
Sidewalks, Streets and Crossings (Walking Audit)	12	8	Mixed
Sidewalks	-	-	-
Streets and Crossings	-	-	-
Street Safety and Appeal	5	15	Mixed
Public Transit Access	-	-	-

NOTES OR OTHER OBSERVATIONS:

ROUTE 9 NOTES AND OTHER OBSERVATIONS

No visually demarcated crosswalks 3rd Ave and 9th St. Good audio cues. Signal timing feels quick. Nice wide curb cut. Narrow boulevard. Limited trees and shade.

9 1/2 and 3rd bad curb cut with drop off. No bike lanes. Would not feel safe on bike with fast traffic. No visually demarcated crosswalks on north/south crosses even where there are stop signs.

10th and 3rd north curb cut goes. South curb cut narrow.

10th and 10th 1/2 uneven sidewalk

11th to 3rd curb cut angles you into 3rd Ave.

No crosswalks between 9th and 17th

11 1/2 area feels exposed to traffic and no boulevard.

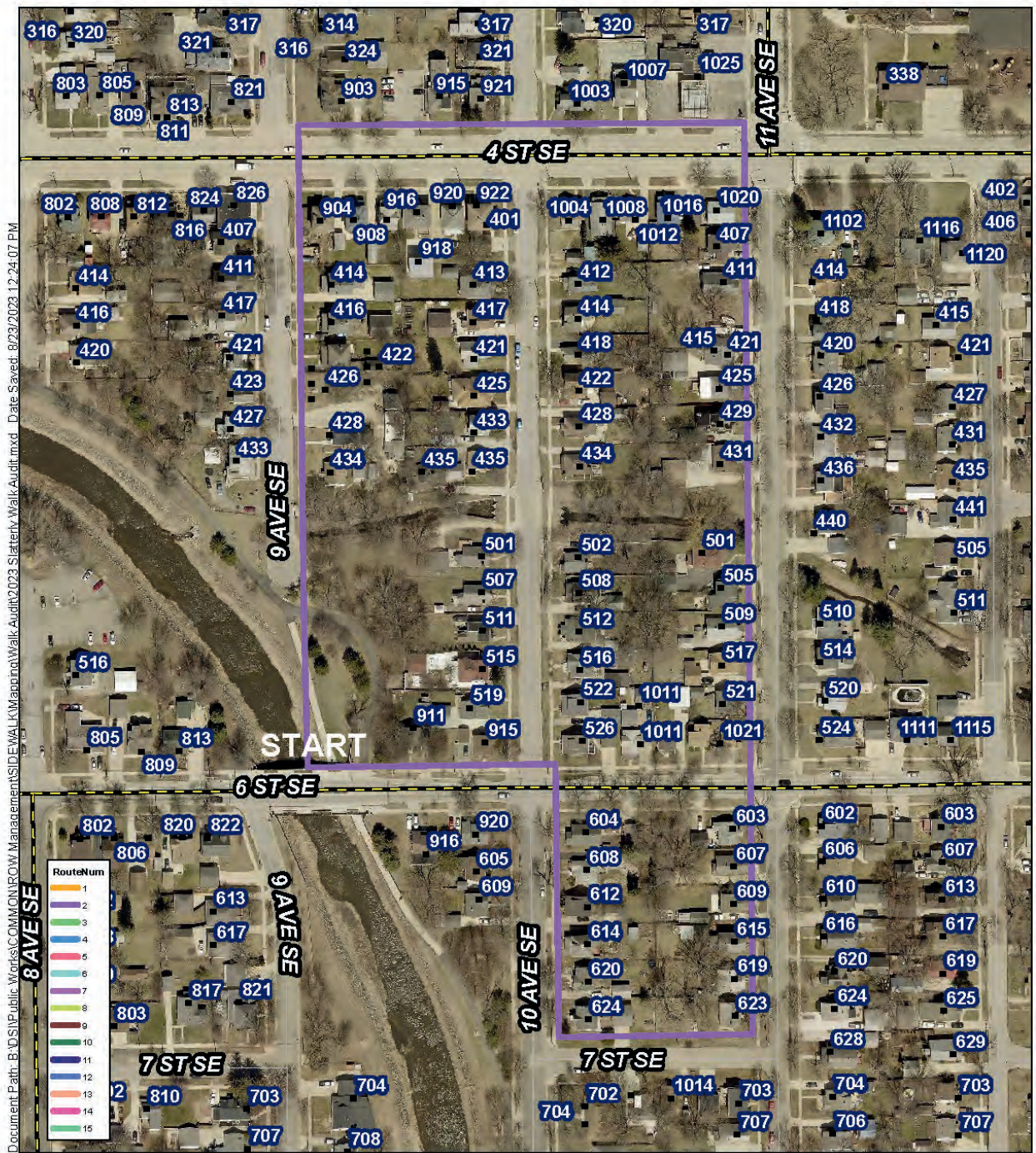
3rd and 12th no painted crosswalks writing on crosswalk signals not readable. Could add pedestrian islands on 12th.

Access on 11 1/2 – big drop off in sidewalk = puddle.

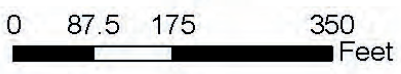
11th more curb cuts pointing onto 3rd Ave

Question – would north/south pedestrian crosses be appropriately lit at night?

Route 10



11 Ave SE & 4 ST SE to 9 Ave Loop



Data contained has not been field verified and should be used as reference only. It is the user's responsibility for field verifying elevations, locations, dimensions, etc. to conduct detailed design.

The City of Rochester specifically disclaims all warranties, express or implied, including but not limited to implied warranties of fitness for a particular purpose, with respect to the information contained on this map. The City of Rochester shall have no liability with respect to any loss or damage directly or indirectly arising out of the use of this data.

Sidewalks, Streets and Crossings WALKING AUDIT

Community Name: Slatterly Park Neighborhood

Starting location: 6th St SE/9thAve SE **Ending location:** 6th St SE/9thAve SE

Route: 11 Ave SE & 4 ST SE to 9 Ave Loop

Audit date: 9/9/23 **Start time:** 11:00am **AM | PM** **End time:** 11:30am **AM | PM**

Posted speed limit(s): 30 mph **Do the motorists appear to be obeying the speed limit(s)?** no

Total number of vehicle lanes: 2 **The street is:** one-way | two-way

If more than one lane: Does the roadway have a median and/or a pedestrian island?

The street has: no sidewalk no sidewalk but needs one no sidewalk but needs two
 partial sidewalks a sidewalk on one side of the street sidewalks on both sides of the street

YES | NO | OTHER Skip any statements that don't apply

THE SIDEWALK:

- 1. Is separated from the street by a barrier or buffer (a curb, grass, landscaping)
- 2. Is surfaced with a material that is smooth and consistent (e.g., concrete or asphalt rather than bricks)
- 3. Is in good condition, without cracks or raised sections
- 4. Is free of obstacles (hydrants, utility poles, overgrown landscaping, trash receptacles)
- 5. Is free of interruptions from driveways (such as to/from homes, parking lots, etc.)
- 6. Is continuous (no segments are missing) and complete (it doesn't randomly end)
- 7. Is wide enough (at least 5 feet) for two people to walk side by side or pass one another
- 8. Has tactile ground surface indicators so pedestrians with vision impairment will know when the path is ending
- 9. Has a curb cut ramp (for use by wheelchairs, baby strollers, etc.) wherever it is interrupted by a street

THE STREET:

- 1. Has traffic lights and/or stop signs at intersections and crossings
- 2. The traffic lights and/or stop signs are clearly visible to drivers and pedestrians
- 3. Has crosswalks
- 4. The crosswalks are well marked and clearly visible to drivers and pedestrians
- 5. Has signage alerting drivers to the presence of pedestrians
- 6. Has a designated bicycle lane
- 7. Has a pedestrian crossing signal, also called a beacon (if yes, complete the next section)

THE PEDESTRIAN CROSSING SIGNALS:

- 1. Are working
- 2. Have a "push-to-walk" mechanism, meaning pedestrians can stop the vehicle traffic
- 3. Have audible prompts for people with vision impairment
- 4. Are placed in appropriate locations (if not, make note of where more are needed)
- 5. Provide enough time to cross (indicate the amount of time provided: _____ minutes _____ seconds)
- 6. Provide suitable opportunities to cross (indicate the amount of time pedestrians must wait for a traffic light change in order to cross: _____ minutes _____ seconds)

Consider using the "Build a Better Block" worksheet as well.

Walkability of the area, based on the findings above: Great Acceptable Mixed Poor

Street Safety and Appeal

Community Name: Slatterly Park Neighborhood

Location/Street Name(s): 11 Ave SE & 4 ST SE to 9 Ave Loop

Audit date: 9/9/23 Start time: 11:00am AM | PM End time: 11:30am AM | PM

YES | NO | OTHER Skip any statements that don't apply

THE LOCATION HAS:

- 1. Places to sit
- 2. Shade trees
- 3. Grass, flowers and landscaping (if yes, is the greenery well maintained? _____)
- 4. Awnings, outdoor umbrellas or other shelter from rain and other weather conditions
- 5. Drinking fountains (if yes, are they working and clean? _____)
- 6. Public restrooms (if yes, are they clean and safe? _____)
- 7. A transit or bus shelter (if yes, is there seating? _____)
- 8. Trash receptacles (if yes, do they appear to be regularly emptied?)
- 9. Buildings and/or homes that are well-maintained
- 10. Informative signage
- 11. Well-placed signage
- 12. Streetscape features (art, signage, etc.) that are representative of/suitable for the community
- 13. Pedestrian-scaled lighting
- 14. A posted speed limit that seems suitable (if yes, does it appear that drivers are obeying the limit? _____)

IMPRESSIONS:

- 1. The location/street is a safe and appealing destination
- 2. The location/street is a safe and appealing travel route
- 3. The location/street appears to be safe for users of all ages, abilities, races, income levels, etc.
- 4. The location/street appears to be safe for pedestrians during both the day and night
- 5. Pedestrians appear to be safe from moving vehicles
- 6. Pedestrians appear to be safe from crime, harassment or similar threats

For "No" or "Other" answers, use the space below or on the back of this worksheet to briefly explain the response.

NOTES OR OTHER OBSERVATIONS:

Walkability of the area, based on the findings above: Great Acceptable Mixed Poor

Summary

Record the score totals for each observation type

- Record the total number of yes responses for the category
- Record the total number of no responses for the category
- Record the one-word rating for the category

This information — as well as all notes, photographs, videos and observation discussions — will be helpful for writing a short report and/or preparing a PowerPoint presentation.

Community Name: Slatterly Park Neighborhood

Street/Intersection Observed: 11 Ave SE & 4 ST SE to 9 Ave Loop and _____

Audit Date: 9/9/23

WORKSHEET	YES RESPONSES	NO RESPONSES	RATING <small>Great Acceptable Mixed Poor</small>
Sidewalks, Streets and Crossings (Single-Location Audit)	-	-	-
Sidewalks, Streets and Crossings (Walking Audit)	7	10	Mixed
Sidewalks	7	4	Mixed
Streets and Crossings	2	5	Poor
Street Safety and Appeal	13	5	Acceptable
Public Transit Access			

NOTES OR OTHER OBSERVATIONS:

ROUTE 10 NOTES AND OTHER OBSERVATIONS

Crossing either no available or not curb cut for wheelchair. Car traffic OK except fast on 15th Ave SE. Houses generally well kept except vegetation grows into sidewalks in places. Not a lot of streetlights, No rest area at all on route except at park.

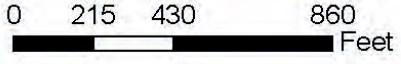
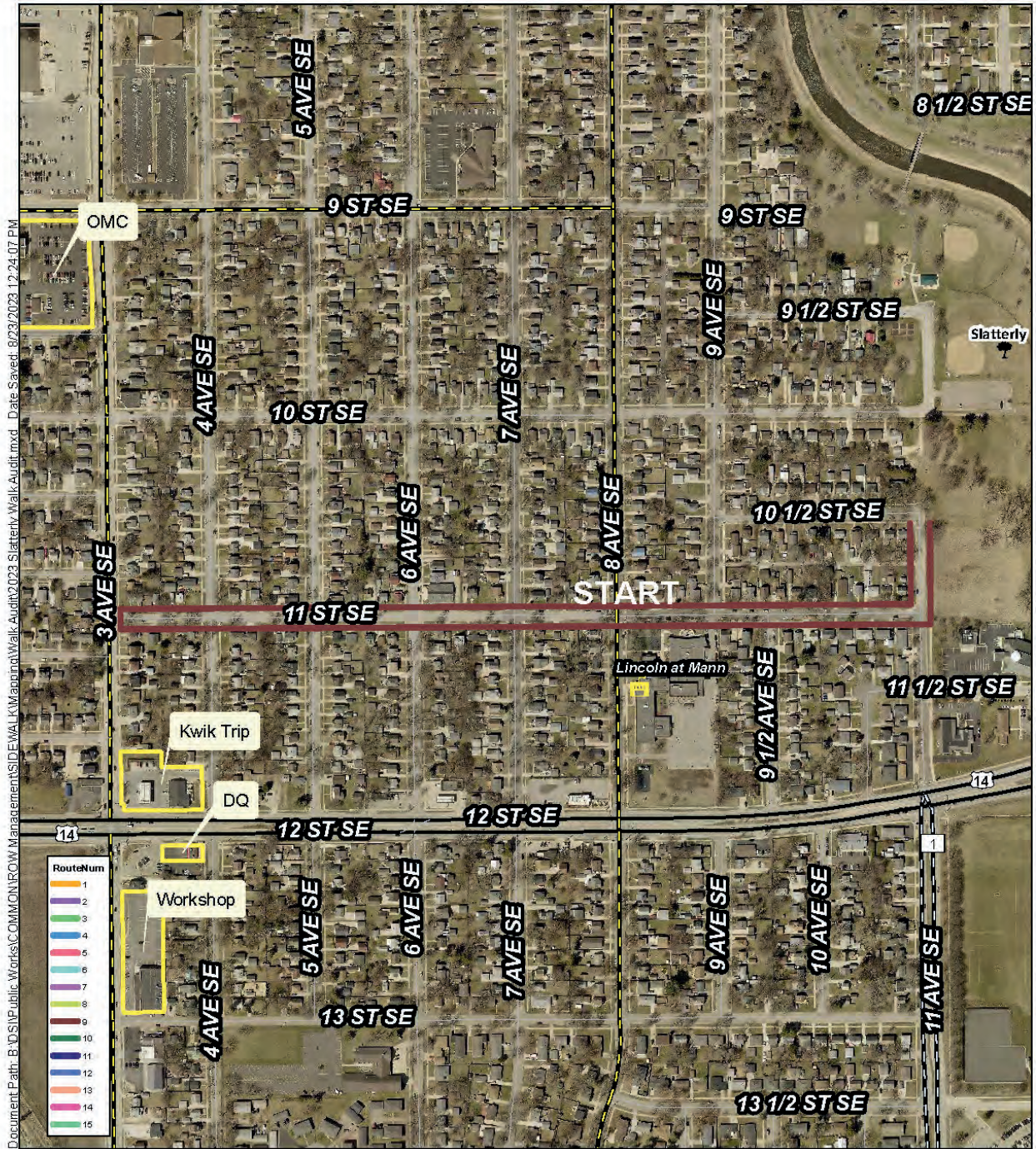
Curb to sidewalk has ridge that is difficult to navigate with wheelchair.

12th and 8th difficult maneuvering for wheelchair users.

Sidewalks in some areas "spotty" No great places to cross many roads.

Sidewalks not complete in several areas. Most streets lack safe crossing points.

Route 11



Data contained has not been field verified and should be used as reference only. It is the user's responsibility for field verifying elevations, locations, dimensions, etc. to conduct detailed design.

The City of Rochester specifically disclaims all warranties, express or implied, including but not limited to implied warranties of fitness for a particular purpose, with respect to the information contained on this map. The City of Rochester shall have no liability with respect to any loss or damage directly or indirectly arising out of the use of this data.

Sidewalks, Streets and Crossings WALKING AUDIT

Community Name: Slatterly Park Neighborhood

Starting location: 8th Ave SE/ 11th St SE **Ending location:** 8th Ave SE/ 11th St SE

Route: 11St SE - 3 Ave to 11 Ave

Audit date: 9/9/23 **Start time:** 11:am **AM | PM** **End time:** 11:40am **AM | PM**

Posted speed limit(s): Did not see posting. **Do the motorists appear to be obeying the speed limit(s)?** not much traffic

Total number of vehicle lanes: 2 **The street is:** one-way | two-way

If more than one lane: Does the roadway have a median and/or a pedestrian island?

The street has: no sidewalk no sidewalk but needs one no sidewalk but needs two
 partial sidewalks a sidewalk on one side of the street sidewalks on both sides of the street

YES | NO | OTHER Skip any statements that don't apply

THE SIDEWALK:

- 1. Is separated from the street by a barrier or buffer (a curb, grass, landscaping)
- 2. Is surfaced with a material that is smooth and consistent (e.g., concrete or asphalt rather than bricks)
- 3. Is in good condition, without cracks or raised sections
- 4. Is free of obstacles (hydrants, utility poles, overgrown landscaping, trash receptacles)
- 5. Is free of interruptions from driveways (such as to/from homes, parking lots, etc.)
- 6. Is continuous (no segments are missing) and complete (it doesn't randomly end)
- 7. Is wide enough (at least 5 feet) for two people to walk side by side or pass one another
- 8. Has tactile ground surface indicators so pedestrians with vision impairment will know when the path is ending
- 9. Has a curb cut ramp (for use by wheelchairs, baby strollers, etc.) wherever it is interrupted by a street

THE STREET:

- 1. Has traffic lights and/or stop signs at intersections and crossings
- 2. The traffic lights and/or stop signs are clearly visible to drivers and pedestrians
- 3. Has crosswalks
- 4. The crosswalks are well marked and clearly visible to drivers and pedestrians
- 5. Has signage alerting drivers to the presence of pedestrians
- 6. Has a designated bicycle lane
- 7. Has a pedestrian crossing signal, also called a beacon (if yes, complete the next section)

THE PEDESTRIAN CROSSING SIGNALS:

- 1. Are working
- 2. Have a "push-to-walk" mechanism, meaning pedestrians can stop the vehicle traffic
- 3. Have audible prompts for people with vision impairment
- 4. Are placed in appropriate locations (if not, make note of where more are needed)
- 5. Provide enough time to cross (indicate the amount of time provided: _____ minutes _____ seconds)
- 6. Provide suitable opportunities to cross (indicate the amount of time pedestrians must wait for a traffic light change in order to cross: _____ minutes _____ seconds)

Consider using the "Build a Better Block" worksheet as well.

Walkability of the area, based on the findings above: Great Acceptable Mixed Poor

Street Safety and Appeal

Community Name: Slatterly Park Neighborhood

Location/Street Name(s): 11 St SE - 3 Ave to 11 Ave

Audit date: 9/9/23 Start time: 11:00am AM | PM End time: 11:40am AM | PM

YES | NO | OTHER Skip any statements that don't apply

THE LOCATION HAS:

- 1. Places to sit
- 2. Shade trees
- 3. Grass, flowers and landscaping (if yes, is the greenery well maintained? _____)
- 4. Awnings, outdoor umbrellas or other shelter from rain and other weather conditions
- 5. Drinking fountains (if yes, are they working and clean? _____)
- 6. Public restrooms (if yes, are they clean and safe? _____)
- 7. A transit or bus shelter (if yes, is there seating? _____)
- 8. Trash receptacles (if yes, do they appear to be regularly emptied?)
- 9. Buildings and/or homes that are well-maintained
- 10. Informative signage
- 11. Well-placed signage
- 12. Streetscape features (art, signage, etc.) that are representative of/suitable for the community
- 13. Pedestrian-scaled lighting
- 14. A posted speed limit that seems suitable (if yes, does it appear that drivers are obeying the limit? _____)

IMPRESSIONS:

- 1. The location/street is a safe and appealing destination
- 2. The location/street is a safe and appealing travel route
- 3. The location/street appears to be safe for users of all ages, abilities, races, income levels, etc.
- 4. The location/street appears to be safe for pedestrians during both the day and night
- 5. Pedestrians appear to be safe from moving vehicles
- 6. Pedestrians appear to be safe from crime, harassment or similar threats

For "No" or "Other" answers, use the space below or on the back of this worksheet to briefly explain the response.

NOTES OR OTHER OBSERVATIONS:

Walkability of the area, based on the findings above: Great Acceptable Mixed Poor

Summary

Record the score totals for each observation type

- Record the total number of yes responses for the category
- Record the total number of no responses for the category
- Record the one-word rating for the category

This information — as well as all notes, photographs, videos and observation discussions — will be helpful for writing a short report and/or preparing a PowerPoint presentation.

Community Name: Slatterly Park Neighborhood

Street/Intersection Observed: 11 St SE - 3 Ave to 11 Ave and _____

Audit Date: 9/9/23

WORKSHEET	YES RESPONSES	NO RESPONSES	RATING <small>Great Acceptable Mixed Poor</small>
Sidewalks, Streets and Crossings (Single-Location Audit)	-	-	-
Sidewalks, Streets and Crossings (Walking Audit)	5	5	Acceptable
Sidewalks	-	-	Acceptable
Streets and Crossings	-	-	Mixed
Street Safety and Appeal	7	7	Mixed
Public Transit Access	-	-	None

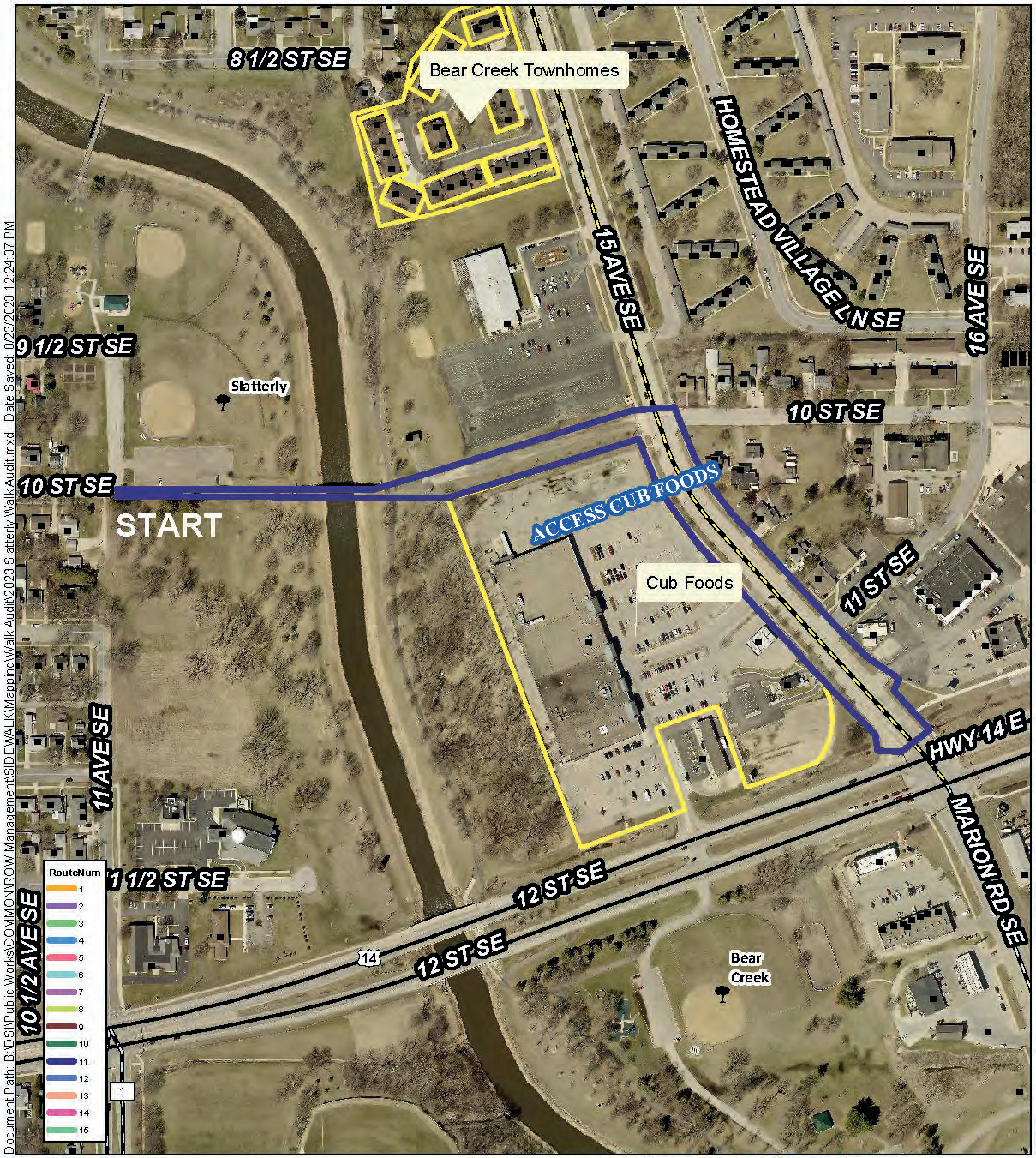
NOTES OR OTHER OBSERVATIONS:

ROUTE 11 NOTES AND OTHER OBSERVATIONS

Most of the homes were well maintained. There was a few houses that did not make this route appealing or feel safe if I was alone with kids. One house in particular really did take away from the whole experience. The house was right by the school. There were several wonderful homes on the street with beautifully maintains yards and landscaping.

Many of the curbs were single cut out in the milled of the curb. Some of the curbs have been replaced with two cut outs and tactile ground surface indicators. There are crosswalks and signage directly next to the school but when you go a block away there is not any crosswalks. The paw prints going half a block away from the school leading to the school were very nice. When crossing from the south side of 11 St SE to the north side of the street along 3 Ave SE there was not a crosswalk or any signage. 3 Ave SE did seem to be a higher traffic street and it would be nice to not have the curb cut our in the middle of the curb and to have a crosswalk. There were a few places that had overgrown landscape but one problematic location was at the corner of 4 Ave SE amd 11 St SE where there were a bush with thorns that hung over halk the sidewalk. There were some cracks and dips in the sidewalks. On the east side of 11 Ave SE the sidewalk does just end.

Route 12



Slatterly Park to Cub Foods



Data contained has not been field verified and should be used as reference only. It is the user's responsibility for field verifying elevations, locations, dimensions, etc. to conduct detailed design.

The City of Rochester specifically disclaims all warranties, express or implied, including but not limited to implied warranties of fitness for a particular purpose, with respect to the information contained on this map. The City of Rochester shall have no liability with respect to any loss or damage directly or indirectly arising out of the use of this data.

Sidewalks, Streets and Crossings WALKING AUDIT

Community Name: Slatterly Park Neighborhood

Starting location: 10th St SE/11th Ave SE **Ending location:** 10h St SE/11th Ave SE

Route: Slatterly Park to Cub Foods

Audit date: 9/9/23 **Start time:** 10:40am **AM | PM** **End time:** 11:30am **AM | PM**

Posted speed limit(s): 30mph **Do the motorists appear to be obeying the speed limit(s)?** no

Total number of vehicle lanes: 4 **The street is:** one-way | two-way

If more than one lane: Does the roadway have a median and/or a pedestrian island?

The street has: no sidewalk no sidewalk but needs one no sidewalk but needs two
 partial sidewalks a sidewalk on one side of the street sidewalks on both sides of the street

YES | NO | OTHER Skip any statements that don't apply

THE SIDEWALK:

- 1. Is separated from the street by a barrier or buffer (a curb, grass, landscaping)
- 2. Is surfaced with a material that is smooth and consistent (e.g., concrete or asphalt rather than bricks)
- 3. Is in good condition, without cracks or raised sections
- 4. Is free of obstacles (hydrants, utility poles, overgrown landscaping, trash receptacles)
- 5. Is free of interruptions from driveways (such as to/from homes, parking lots, etc.)
- 6. Is continuous (no segments are missing) and complete (it doesn't randomly end)
- 7. Is wide enough (at least 5 feet) for two people to walk side by side or pass one another
- 8. Has tactile ground surface indicators so pedestrians with vision impairment will know when the path is ending
- 9. Has a curb cut ramp (for use by wheelchairs, baby strollers, etc.) wherever it is interrupted by a street

THE STREET:

- 1. Has traffic lights and/or stop signs at intersections and crossings
- 2. The traffic lights and/or stop signs are clearly visible to drivers and pedestrians
- 3. Has crosswalks
- 4. The crosswalks are well marked and clearly visible to drivers and pedestrians
- 5. Has signage alerting drivers to the presence of pedestrians
- 6. Has a designated bicycle lane
- 7. Has a pedestrian crossing signal, also called a beacon (if yes, complete the next section)

THE PEDESTRIAN CROSSING SIGNALS:

- 1. Are working
- 2. Have a "push-to-walk" mechanism, meaning pedestrians can stop the vehicle traffic
- 3. Have audible prompts for people with vision impairment
- 4. Are placed in appropriate locations (if not, make note of where more are needed)
- 5. Provide enough time to cross (indicate the amount of time provided: _____ minutes 18 seconds)
- 6. Provide suitable opportunities to cross (indicate the amount of time pedestrians must wait for a traffic light change in order to cross: _____ minutes _____ seconds)

Consider using the "Build a Better Block" worksheet as well.

Walkability of the area, based on the findings above: Great Acceptable Mixed Poor

Street Safety and Appeal

Community Name: Slatterly Park Neighborhood

Location/Street Name(s): Slatterly Park to Cub Foods

Audit date: 9/9/23 Start time: 10:40am AM | PM End time: 11:30am AM | PM

YES | NO | OTHER Skip any statements that don't apply

THE LOCATION HAS:

- 1. Places to sit
- 2. Shade trees
- 3. Grass, flowers and landscaping (if yes, is the greenery well maintained? _____)
- 4. Awnings, outdoor umbrellas or other shelter from rain and other weather conditions
- 5. Drinking fountains (if yes, are they working and clean? _____)
- 6. Public restrooms (if yes, are they clean and safe? _____)
- 7. A transit or bus shelter (if yes, is there seating? _____)
- 8. Trash receptacles (if yes, do they appear to be regularly emptied?)
- 9. Buildings and/or homes that are well-maintained
- 10. Informative signage
- 11. Well-placed signage
- 12. Streetscape features (art, signage, etc.) that are representative of/suitable for the community
- 13. Pedestrian-scaled lighting
- 14. A posted speed limit that seems suitable (if yes, does it appear that drivers are obeying the limit? _____)

IMPRESSIONS:

- 1. The location/street is a safe and appealing destination
- 2. The location/street is a safe and appealing travel route
- 3. The location/street appears to be safe for users of all ages, abilities, races, income levels, etc.
- 4. The location/street appears to be safe for pedestrians during both the day and night
- 5. Pedestrians appear to be safe from moving vehicles
- 6. Pedestrians appear to be safe from crime, harassment or similar threats

For "No" or "Other" answers, use the space below or on the back of this worksheet to briefly explain the response.

NOTES OR OTHER OBSERVATIONS:

Walkability of the area, based on the findings above: Great Acceptable Mixed Poor

Summary

Record the score totals for each observation type

- Record the total number of yes responses for the category
- Record the total number of no responses for the category
- Record the one-word rating for the category

This information — as well as all notes, photographs, videos and observation discussions — will be helpful for writing a short report and/or preparing a PowerPoint presentation.

Community Name: Slatterly Park Neighborhood

Street/Intersection Observed: Slatterly Park to Cub Foods and _____

Audit Date: 9/9/23

WORKSHEET	YES RESPONSES	NO RESPONSES	RATING <small>Great Acceptable Mixed Poor</small>
Sidewalks, Streets and Crossings (Single-Location Audit)	-	-	-
Sidewalks, Streets and Crossings (Walking Audit)	11	9	Acceptable
Sidewalks	-	-	-
Streets and Crossings	-	-	-
Street Safety and Appeal	8	9	Acceptable
Public Transit Access	-	-	-

NOTES OR OTHER OBSERVATIONS:

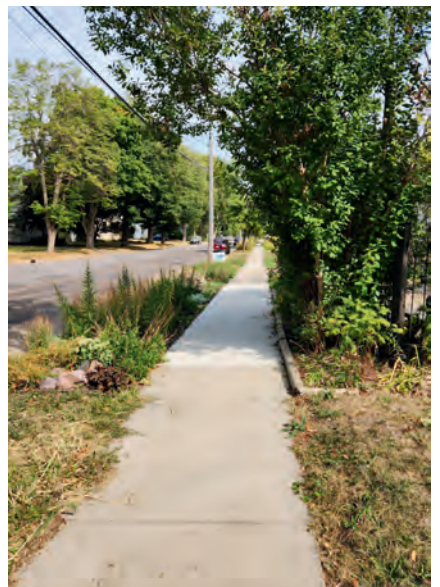
ROUTE 12 NOTES AND OTHER OBSERVATIONS

Dirt covered. Grass encroaching. No paint on crosswalks. Sidewalks vary from 3 – 5ft width. 15th Ave SE/10th St SE has no lights or stop sign or crosswalks. Very few shade trees. Edging would widen sidewalks. Place to sit only at bus stop. Signage worn and faded.

Nice buffer of grass on south side. Bench on north side of Bear Creek, east of disc golf bridge.



Walk Audit Images













This project is funded by a grant from

